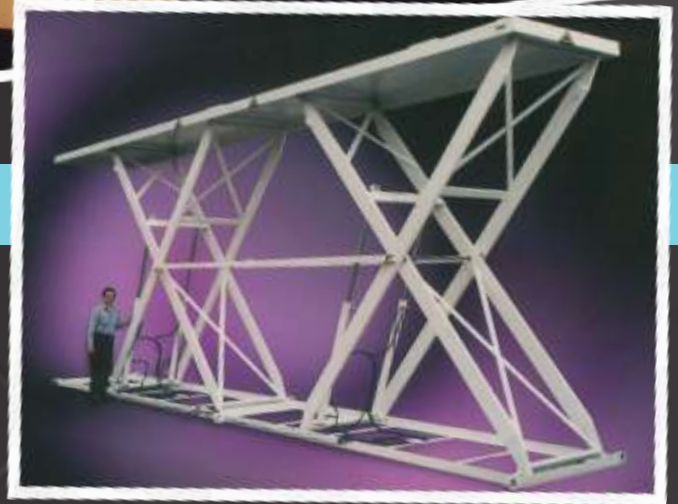




Engineered Solutions for Your Material Handling Needs.

Air Technical Industries has over five decades of experience in the design and manufacture of material handling equipment, automation systems and robotics. We are dedicated to solving the challenges faced by industry today, and achieving increased efficiency and productivity. We have built an international reputation for quality and service in the engineering, design and manufacturing of our broadly diversified product line of over 2,500 standard models and our virtually limitless customized application abilities to help in...

Making the Job Easier.



LOOK WHERE WE'VE BEEN

Custom designed Reversible Boom Crane that aided in the building of the International Space Station.

This custom, extra long Tandem Scissor Lift provides a solution for the military's helicopter blade testing system.

1964 – ATi started operations with one product – the VM-1000 Mobile Hydraulic Floor Crane (V-Master), a 1,000 lb capacity portable floor crane lifting 8' high in its original 1,000 sq. ft. frame building. ATi operated its offices from "Air Technical Academy" (school bus) while construction was being completed! Later that year, ATi began manufacturing portable elevators and stackers.

1967 – A new 5,000 sq. ft. building was built, increasing capacity fivefold.

1968 – Began manufacturing hydraulic scissor lift tables along with more models of portable floor cranes such as the Port-O-Giant and Reversible Boom Crane.

1970 – The manufacturing of truck-mounted cranes began.

1972 – Throughout the 1970s, several expansions of the facility took place to accommodate the company's growth, increasing the total space from 5,000 sq. ft. to 60,000 sq. ft.

1975 – ATi developed the Jib-Master series of forklift cranes.

Innovative Engineering & Custom Application Design

Our highly qualified engineers are experienced in a wide range of handling equipment applications. Utilizing the latest technologies, they are able to perform the analysis, calculations and testing required to design the most productive, efficient and ergonomic equipment available today. Even with our extensive line of products, our experienced staff of engineers can design equipment that will solve your specific material handling problems. We can provide an innovative, turn-key system that will provide years of increased productivity and service for your specific application.

Equipment Built Tough For Years Of Dependability

Our high standard of manufacturing doesn't end with our Engineering Department. We continue our pursuit of excellence by coupling only the finest, most dependable materials and components with highly skilled workmanship. You get equipment that is built to last, year after year, even in the most demanding settings.

Increasing Your Productivity Is Our Goal

Every piece of equipment that we produce is built with one goal in mind: To increase worker productivity! By achieving this for our customers, worker fatigue, injury and downtime are minimized. One of the ways we do this is by engineering our products to meet strict ergonomic standards. This means every aspect of worker comfort and efficiency has been studied and incorporated into the product design. The benefits for you are increased productivity and maximized profits!

"Making The Job Easier" Is More Than Our Motto

In every aspect of doing business with us, we want to make your job easier. From the very first phone contact, to placing an order, through delivery, our customer service department is here to help you in any way they can. Most of our products require little or no installation—just attach it to a power source and you are ready to begin experiencing higher productivity.



1988 – Further expansion included a new addition of 15,000 sq. ft. plus a second story with 5,000 sq. ft. for offices, for the total 80,000 sq. ft. in use today.

1988

1990 – Designed and began manufacturing the revolutionary "Zero-Low Ground Level Scissor Lift Table", which allowed the deck of a lift to lower to ground level—an industry first!

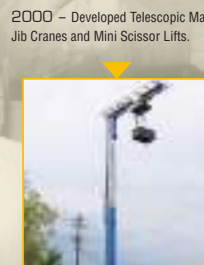


1990



1998 – Began developing heavy duty lines of self-propelled mobile cranes to handle 6,000 to 50,000 lb.

1998



2000

2000 – Developed Telescopic Mast Jib Cranes and Mini Scissor Lifts.



2009 – Announced the launch of the Scorpion Aircraft Tug, a first-of-its-kind tug that includes a built-in crane lift and auxiliary power unit (APU). The Scorpion enables fixed-base operator (FBO) aircraft mechanics to move and precisely position aircraft weighing up to 15,000 lb.

2009

Celebrating
50
Years

2010 – Developed Tele-Mast Straddle Cranes for container handling up to 60,000 lb.



2010

What's So Special About Us?

- ▶ We are a supermarket of Material Handling Equipment. **With over 2,500 products**, this means one-stop shopping to provide a total solution.
- ▶ Our caring & competent Sales Engineers are able to answer most any question you may have about how we can solve your handling problems.
- ▶ If we don't have a standard product to meet your needs, our innovative and resourceful Engineering Department can create a customized product!
- ▶ By consulting with you about your specific handling needs, we offer the added value that comes from over 5 decades of experience.
- ▶ We maintain a solid inventory of many standard products that are available to our customers within 7 to 10 days! Prompt replacement parts service is available. In many instances - overnight!
- ▶ Our products are built of heavy-duty welded steel construction for years of trouble-free operation.
- ▶ The value-to-price ratio of our products is extremely high.
- ▶ **BOTTOM LINE:** We are "YES" people who are dedicated to providing solutions to even the most challenging material handling problems.

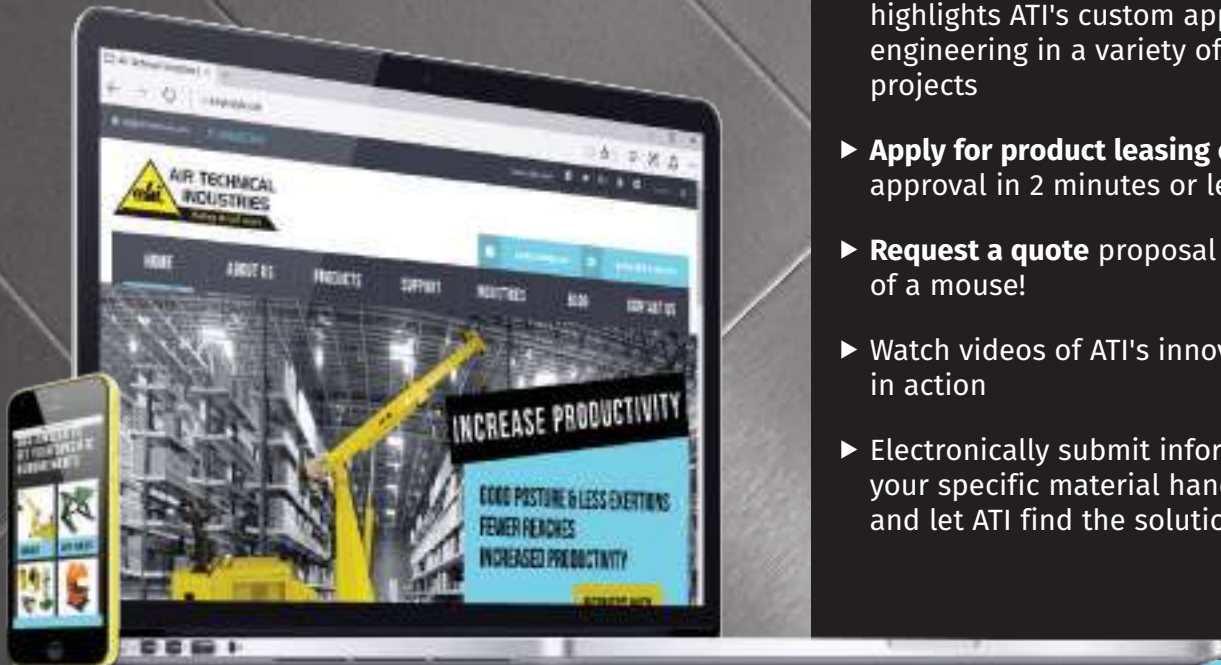


Visit Us on the Web at www.airtechnical.com

Air Technical Industries is dedicated to 'Making the Job Easier' in every possible way. Our web site is just another way we do this for you! Our site is open 24-hours a day, 365 days a year to help answer questions when it's convenient for you. Check us out online at www.airtechnical.com today!

What you'll find:

- ▶ The most up to date information about ATI's products and innovations.
- ▶ **"Look Where We've Been!"** This section highlights ATI's custom application engineering in a variety of high-profile projects
- ▶ **Apply for product leasing online!** Leasing approval in 2 minutes or less.
- ▶ **Request a quote** proposal with the click of a mouse!
- ▶ Watch videos of ATI's innovative solutions in action
- ▶ Electronically submit information about your specific material handling challenge and let ATI find the solution!



AIR TECHNICAL INDUSTRIES

Table of Contents

Zero-Low Lift Tables

Heavy-Duty Zero-Low Lift.....	8
Low Profile Zero-Low Lift	9
Zero-Low, 3-Point Entry Lift Table.....	13
Zero-Low Dock Lift	11
Zero-Low Lift	7
Zero-Low Lift & Tilt.....	10
Zero-Low Upender Positioner.....	12



7

Lift Tables

Crate Positioner.....	22
Die Handling System	16
Double Scissor Lift Table.....	20
Heavy-Duty Lift Table.....	15
Hydraulic Lift Table	14
Lift Table Options.....	24-25
Lift & Tilt Table	21
Maintenance Lift.....	23
Mechanical Lift Table.....	17
Mini Scissor Lift Table	18
Tandem Scissor Lift Table.....	19



16

Floor Cranes

Econo-Master	26
Husky-Master	27
Port-O-Giant.....	32
Reversible Boom Crane.....	30-31
Super-Master.....	28
V-Master.....	26



26

Truck-Mounted Cranes

Jib-Master Forklift Crane	40
Truck Mounted Foldable Crane	39
Truck Mounted Knuckle Crane.....	38
Truck Mounted Pick-Up Crane	39
Rotating Jib-Master.....	41



36

Gantry & Jib Cranes

A-Frame Gantry Crane.....	33
Floor-Mounted Jib Crane.....	37
Portable Jib Crane	36
Tele-Mast Straddle Crane.....	34-35
Telescoping Mast Jib Crane	40



38

Inverters

Container Dumper.....	44
Econo-Verter.....	45
Pallet Inverter	45
Telescopic Container Dumper	44
Upender Inverter.....	42-43



42

Ordering Information	46
----------------------------	----

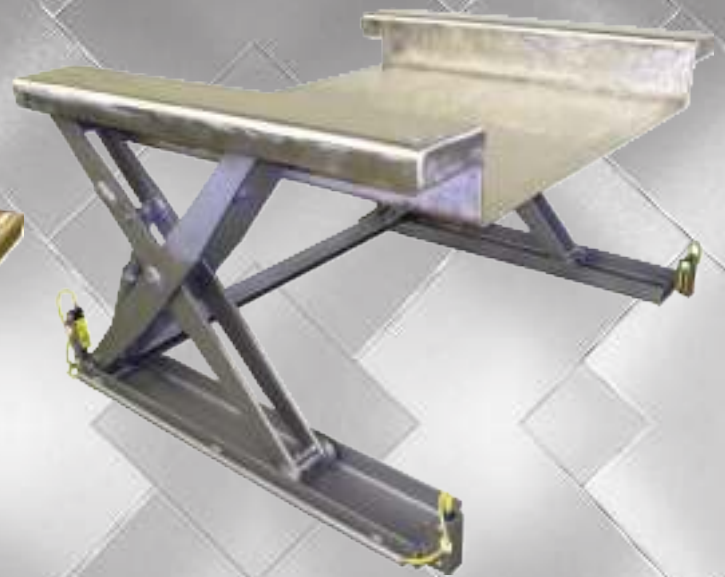
Safety Guide	47
--------------------	----



The Original Zero-Low Lift

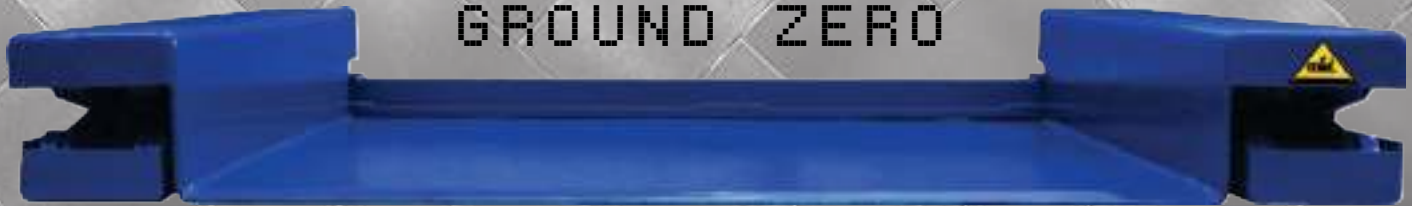


Zero-Low Mechanical screw operated lift.



Zero Low Lift with stainless steel platform for food processing or pharmaceutical applications. (now available in full stainless steel construction)

GROUND ZERO



Pioneered by ATI for amazing labor savings!



Zero-Low Lift

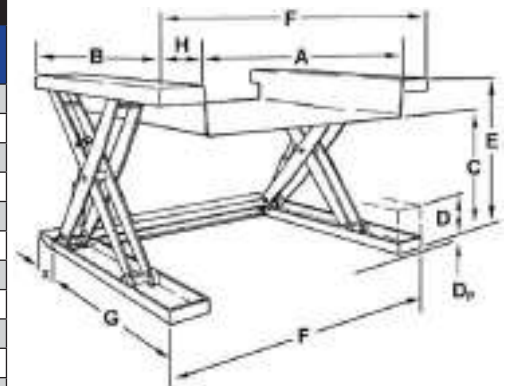
- 250 to 4,000 lb. capacities, up to 48 in. raised height.
- Ground level, roll-on loading, roll-off unloading. The first scissor lift table to lower to ground level for easy loading of a wheeled cart or pallet truck.
- No required lifting decreases the possibility of worker injuries. The Zero-Low Lift eliminates the need to lift loads the 8 to 10 inches required to load a conventional lift table.
- Variable work levels enable more efficient productivity.
- A variety of uses means greater material handling versatility.
- Eliminates the inconvenience and expense of ramps, pits and fork trucks.
- Wheel-mounted modification available for added flexibility and mobility.
- Various power options available including 120V AC, 240/480V AC, 3-phase; battery, (battery not included); or air powered (for hazardous operations or where shop air is more plentiful).
- Tables designed for smooth, easy and safe operation.
- All standard scissor lift tables have hydraulic lift up and gravity lowering. If lowering speed is required, then order optional Double Acting Power System-See pg. 25, option #14 for details.
- NEW mechanical screw operated units now available!



Loads raised for convenient unloading into storage.

Pallet trucks and two-wheeled carts transfer loads easily to Zero-Low Lifts.

Capacity (lbs.)	Platform Size A x B (in.)	Lowered Height Dp (in.)	Vertical Travel C (in.)	Overall Size *F x G (in.)	Lowered Height D (in.)	Overall Height E (in.)	Model Number	
							Electric Motor	Air Motor
250	26 x 36	3/8	22	*43 x 40	8	30	ZLA-2636E	ZLA-2636A
500	34 x 66	3/8	42	*51 x 70	8	50	ZLB-3466E	ZLB-3466A
500	50 x 48	3/8	32	*67 x 52	8	40	ZLB-5048E	ZLB-5048A
500	50 x 72	3/8	48	*67 x 76	10	58	ZLB-5072E	ZLB-5072A
1,000	50 x 48	1/2	32	*67 x 52	8	40	ZLC-5048E	ZLC-5048A
1,000	50 x 72	1/2	48	*67 x 76	10	58	ZLC-5072E	ZLC-5072A
2,000	26 x 54	1/2	36	*43 x 58	8	44	ZLD-2654E	ZLD-2654A
2,000	50 x 48	1/2	32	*67 x 52	8	40	ZLD-5048E	ZLD-5048A
2,000	50 x 72	1/2	48	*67 x 76	10	58	ZLD-5072E	ZLD-5072A
4,000	50 x 48	3/4	32	*69 x 52	8	40	ZLE-5048E	ZLE-5048A
4,000	50 x 72	3/4	48	*69 x 76	10	58	ZLE-5072E	ZLE-5072A



Note: When wheels are added, lowered height is increased by at least one inch; overall length also increases by "X". Please consult factory.
*F-Dimension increases when Extra Heavy Duty Cycle Package (EHDCP) option is added.

Heavy-Duty Zero-Low Lift

- This heavy-duty version of our original **zero-low lift table** improves versatility and ergonomics. The deck of the lift lowers to ground level for ease of operation. The load can be rolled onto the lift platform without the use of a ramp or costly pit installation.
- The unit can be used on any level surface and will raise heavy loads to the desired height.
- A wide range of sizes and capacities are available.
- Available in 4,000 to 50,000 lb. capacities.
- Deck sizes range from 50" to 72" wide and 48" to 192" long.
- The vertical lift available is from ground level to 78" high.
- Heavy-duty construction for smooth operation.
- Power options include electric 120V AC single-phase or 240/480V AC 3-phase with your choice of 120 volt push-button, foot pedal, or pedestal control. Air powered hydraulic system also available for hazardous operations.
- All standard scissor lift tables have hydraulic lift up and gravity lowering. If lowering speed is required, then order optional Double Acting Power System-See pg. 25, option #14 for details.

For **Heavier Capacities**, from **Ground Zero** and up!

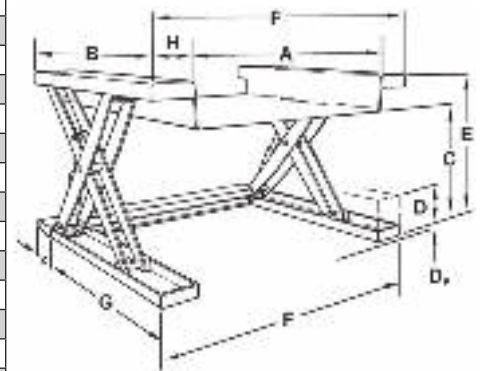


Heavy-Duty Zero-Low Lift in raised position.



Model ZLH-66072-E

Capacity (lbs.)	Platform Size A x B (in.)	Lowered Height D _p (in.)	Vertical Travel C (in.)	Overall Size *F x G (in.)	Lowered Height D (in.)	Overall Height E (in.)	Model Number	
							Electric Motor	Air Motor
4,000	50 x 84	3/4	54	*72 x 88	10	64	ZLH-45084E	ZLH-45084A
4,000	50 x 120	3/4	78	*74 x 128	10	88	ZLH-450120E	ZLH-450120A
4,000	60 x 84	3/4	54	*81 x 88	10	64	ZLH-46084E	ZLH-46084A
4,000	60 x 120	3/4	78	*84 x 128	10	88	ZLH-460120E	ZLH-460120A
6,000	50 x 48	3/4	32	*73 x 52	8	40	ZLH-65048E	ZLH-65048A
6,000	50 x 72	3/4	46	*76 x 76	10	56	ZLH-65072E	ZLH-65072A
6,000	50 x 84	3/4	54	*76 x 88	10	64	ZLH-65084E	ZLH-65084A
6,000	50 x 120	3/4	78	*76 x 128	10	88	ZLH-650120E	ZLH-650120A
6,000	60 x 72	3/4	46	*86 x 76	10	56	ZLH-66072E	ZLH-66072A
6,000	60 x 84	3/4	54	*86 x 88	10	64	ZLH-66084E	ZLH-66084A
6,000	60 x 120	3/4	78	*86 x 128	10	88	ZLH-660120E	ZLH-660120A
10,000	60 x 72	3/4	46	*90.5 x 78	15	61	ZLH-106072E	ZLH-106072A
10,000	60 x 84	1-1/2	56	*90.5 x 94	15	71	ZLH-106084E	ZLH-106084A
10,000	60 x 120	1-1/2	72	*90.5 x 130	15	87	ZLH-1060120E	ZLH-1060120A
10,000	60 x 156	1-1/2	96	*90.5 x 166	15	111	ZLH-1060156E	ZLH-1060156A
25,000	60 x 144	1-3/4	72	*98 x 152	24	96	ZLH-25512E	ZLH-25512A
25,000	72 x 192	1-3/4	72	*110 x 200	24	96	ZLH-25616E	ZLH-25616A
50,000	72 x 144	2	72	*118 x 152	36	108	ZLH-50612E	ZLH-50612A
50,000	72 x 192	2	72	*118 x 200	36	108	ZLH-50616E	ZLH-50616A



*F-Dimension increases when Extra Heavy Duty Cycle Package (EHDCP) option is added.

Keep a **Low Profile** with the new lower fender height!



Model ZLLPC-5048-E

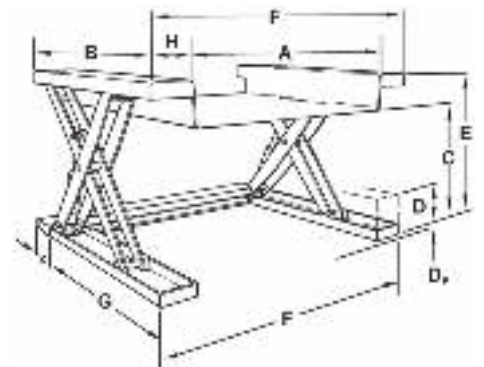
Low Profile Zero-Low Lift

- Brings loads even closer to the operator to save time, improve safety, reduce worker fatigue and boost morale — all providing increased productivity and profits!
- 1,000 & 2,500 lb. capacities, up to 46" lift height.
- Lower, narrower fenders allow for easier access by the operator.
- More compact design allows operator to reach load without having to bend over the fender.
- Designed for easier loading by pallet truck.
- Wide variety of deck sizes available to fit any size load.
- Decks available in 26, 38, 44 and 50 inch widths; and 48 and 72 inch lengths.
- Power options include electric 120V AC single phase or 240/480V AC, 3-phase; with a choice of 120V push-button or foot-pedal control.
- All standard scissor lift tables have hydraulic lift up and gravity lowering. If lowering speed is required, then order optional Double Acting Power System-See pg. 25, option #14 for details.



Lower, narrower fenders allow loaded pallets to be set on the fenders so the operator can easily reach the load.

Capacity (lbs.)	Platform Size A x B (in.)	Lowered Height D _P (in.)	Vertical Travel C (in.)	Overall Size *F x G (in.)	Lowered Height D (in.)	Overall Height E (in.)	Model Number	
							Electric Motor	Air Motor
1,000	26 x 48	3/8	32	*40 x 52	5	37	ZLLPC-2648E	ZLLPC-2648A
1,000	38 x 48	3/8	32	*52 x 52	5	37	ZLLPC-3848E	ZLLPC-3848A
1,000	44 x 48	3/8	32	*58 x 52	5	37	ZLLPC-4448E	ZLLPC-4448A
1,000	50 x 48	3/8	32	*64 x 52	5	37	ZLLPC-5048E	ZLLPC-5048A
1,000	50 x 72	3/8	46	*64 x 76	6	38	ZLLPC-5072E	ZLLPC-5072A
2,500	26 x 48	1/2	32	*42 x 52	6	38	ZLLPF-2648E	ZLLPF-2648A
2,500	38 x 48	1/2	32	*54 x 52	6	38	ZLLPF-3848E	ZLLPF-3848A
2,500	44 x 48	1/2	32	*60 x 52	6	38	ZLLPF-4448E	ZLLPF-4448A
2,500	50 x 48	1/2	32	*66 x 52	6	38	ZLLPF-5048E	ZLLPF-5048A
2,500	38 x 72	1/2	46	*54 x 76	7	53	ZLLPF-3872E	ZLLPF-3872A
2,500	50 x 72	1/2	46	*66 x 76	7	53	ZLLPF-5072E	ZLLPF-5072A



Note: When wheels are added, lowered height is increased by at least one inch; overall length also increases by "X". Please consult factory.
 *F-Dimension increases when Extra Heavy Duty Cycle Package (EHDCP) option is added.

Zero-Low Lift & Tilt

- 1,000 to 6,000 lb. capacities, up to 46 in. lift.
- Table tilts up to 45 degrees for load handling ease. 60 to 90 degree tilt modifications are available – consult factory.
- Lifts load from ground level to desired height and then tilts the load for easy handling.
- Puts work within easy reach of the worker for increased productivity, safety and morale.
- Virtually eliminates bending, reaching, stretching and lifting, reducing worker fatigue and the risk of back injuries.
- Power options include electric 120V AC single phase or 240/480V AC, 3-phase; with a choice of 120V push-button or foot-pedal control.
- Polyurethane safety toe guard available for added safety.
- All standard scissor lift tables have hydraulic lift up and gravity lowering. If lowering speed is required, then order optional Double Acting Power System-See pg. 25, option #14 for details.



Model ZLTTE-5048-E



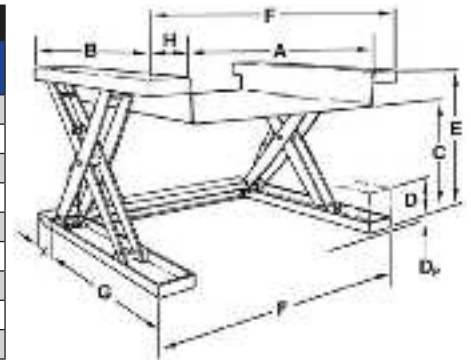
Raises to any position and then tilts to place load in easy reach of worker.



Zero-Low Lift & Tilt in lowered, zero ground level position.

Displace the load, not your back.

Capacity (lbs.)	Platform Size A x B (in.)	Lowered Height Dp (in.)	Vertical Travel C (in.)	Overall Size *F x G (in.)	Lowered Height D (in.)	Overall Height E (in.)	Model Number	
							Electric Motor	Air Motor
1,000	50 x 48	1/2	32	*74 x 52.5	11.5	43.5	ZLTTC-5048E	ZLTTC-5048A
2,000	50 x 48	1/2	32	*74 x 52.5	11.5	43.5	ZLTTD-5048E	ZLTTD-5048A
4,000	50 x 48	3/4	32	*76 x 52.5	11.5	43.5	ZLTTE-5048E	ZLTTE-5048A
2,000	50 x 72	1/2	46	*74 x 76.5	14	60	ZLTTD-5072E	ZLTTD-5072A
4,000	50 x 72	3/4	46	*76 x 76.5	14	60	ZLTTE-5072E	ZLTTE-5072A
4,000	60 x 60	3/4	40	*86 x 64.5	12.5	52.5	ZLTTE-6060E	ZLTTE-6060A
4,000	60 x 72	3/4	46	*86 x 76.5	14	60	ZLTTE-6072E	ZLTTE-6072A
6,000	50 x 48	3/4	30	*78 x 52.5	14	44	ZLTTG-5048E	ZLTTG-5048A
6,000	60 x 72	3/4	46	*88 x 76.5	14	60	ZLTTG-6072E	ZLTTG-6072A



Note: This unit must be fastened to floor before use.

*F-Dimension increases when Extra Heavy Duty Cycle Package (EHDPC) option is added.

*Rated capacity is up to 45° tilt. Capacity drops 50% on tilts greater than 45° and up to 75% at 90° tilt. Base size dimension includes bolt-down tabs.



model ZDK-1060120E
(shown without guard rails)

Zero-Low Dock Lift

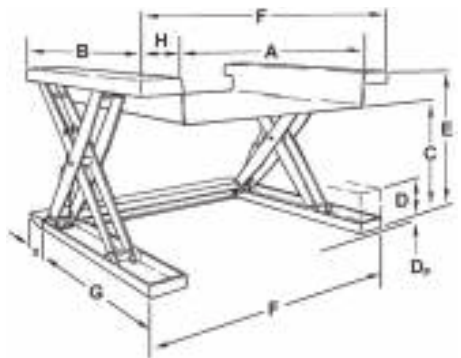
- 4,000 to 50,000 lb. capacities.
- Work from different elevations for easy raising and lowering of loads.
- Ground-zero loading without the need for ramps or cumbersome inclines. Easy and convenient to drive on to with a pallet truck, forklift, or roll on loads then lift from ground level to your desired height.
- Saves the expense and inconvenience of pit mounting and offers the versatility to be used any place on a solid floor for easy loading & unloading.
- Piano-hinged dock plate for smooth loading and secure loads.
- All standard scissor lift tables have hydraulic lift up and gravity lowering. If lowering speed is required, then order optional Double Acting Power System-See pg. 25, option #14 for details.



Model ZDK-106084E

Expand your loading dock capabilities!

Capacity (lbs.)	Platform Size A x B (in.)	Lowered Height Dp (in.)	Vertical Travel C (in.)	Overall Size *F x G (in.)	Lowered Height D (in.)	Overall Height E (in.)	Model Number	
							Electric Motor	Air Motor
4,000	50 x 72	3/4	48	*69 x 76	10	58	ZDK-45072E	ZDK-45072A
4,000	50 x 84	3/4	54	*72 x 88	10	64	ZDK-45084E	ZDK-45084A
4,000	50 x 120	3/4	78	*74 x 128	10	88	ZDK-450120E	ZDK-450120A
4,000	60 x 84	3/4	54	*81 x 88	10	64	ZDK-46084E	ZDK-46084A
4,000	60 x 120	3/4	78	*84 x 128	10	88	ZDK-460120E	ZDK-460120A
6,000	50 x 48	3/4	32	*73 x 52	8	40	ZDK-65048E	ZDK-65048A
6,000	50 x 72	3/4	46	*76 x 76	10	56	ZDK-65072E	ZDK-65072A
6,000	50 x 84	3/4	54	*76 x 88	10	64	ZDK-65084E	ZDK-65084A
6,000	50 x 120	3/4	78	*76 x 128	10	88	ZDK-650120E	ZDK-650120A
6,000	60 x 72	3/4	46	*86 x 76	10	56	ZDK-66072E	ZDK-66072A
6,000	60 x 84	3/4	54	*86 x 88	10	64	ZDK-66084E	ZDK-66084A
6,000	60 x 120	3/4	78	*86 x 128	10	88	ZDK-660120E	ZDK-660120A
10,000	60 x 72	1-1/2	46	*90.5 x 82	15	61	ZDK-106072E	ZDK-106072A
10,000	60 x 84	1-1/2	56	*90.5 x 94	15	71	ZDK-106084E	ZDK-106084A
10,000	60 x 120	1-1/2	72	*90.5 x 130	15	87	ZDK-1060120E	ZDK-1060120A
10,000	60 x 156	1-1/2	96	*90.5 x 166	15	111	ZDK-1060156E	ZDK-1060156A
25,000	60 x 144	2	72	*98 x 152	24	96	ZDK-25512E	ZDK-25512A
25,000	72 x 192	2	72	*110 x 200	24	96	ZDK-25616E	ZDK-25616A
50,000	72 x 144	2	72	*118 x 152	36	108	ZDK-50612E	ZDK-50612A
50,000	72 x 192	2	72	*118 x 200	36	108	ZDK-50616E	ZDK-50616A



*F-Dimension increases when Extra Heavy Duty Cycle Package (EHDCP) option is added.

Zero-Low Upender Positioner

- 1,000 to 4,000 lb. capacities.
- Tilts 90 degrees from zero ground level to zero ground level.
- Upends or repositions load, providing easy loading and unloading in both positions.
- Can be equipped with conveyors for automatic loading and unloading at each end. Auto load conveyors available.
- Automatic sequencing available per customer's requirement.

Easy loading, unloading & tilting.



4-Point Entry Rolls, Reels, & Container Upender allows loading and unloading from either front or side



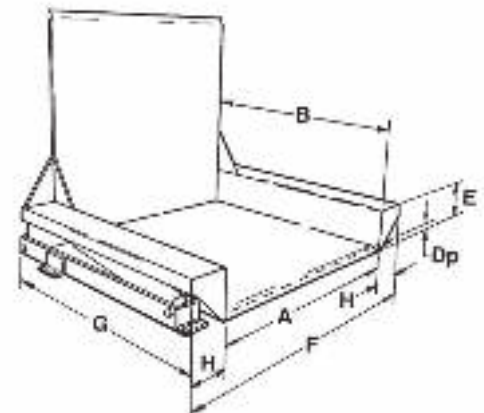
VERTICAL

45° TILT

HORIZONTAL

The Zero-Low Upender/Positioner offers easy roll-on loading or roll-off unloading in both positions.

Capacity (lbs.)	Platform Size A x B (in.)	Lowered Height D (in.)	Overall Size *F x G (in.)	Lowered Height E (in.)	Fender Width H (in.)	Model Number	
						Electric Motor	Air Motor
1,000	50 x 48	1/2	62 x 48	8	6	ZLZTC-5048E	ZLZTC-5048A
2,000	50 x 48	1/2	62 x 48	8	6	ZLZTD-5048E	ZLZTD-5048A
4,000	50 x 48	3/4	64 x 48	8	7	ZLZTE-5048E	ZLZTE-5048A
2,000	50 x 72	1/2	62 x 72	8	6	ZLZTD-5072E	ZLZTD-5072A
4,000	50 x 72	3/4	64 x 72	8	7	ZLZTE-5072E	ZLZTE-5072A
4,000	60 x 60	3/4	74 x 60	8	7	ZLZTE-6060E	ZLZTE-6060A
4,000	60 x 72	3/4	74 x 72	8	7	ZLZTE-6072E	ZLZTE-6072A



Note: This unit must be fastened to floor before use.

3-Way Easy Access!

Easiest to use lift table of all time!
ATI's new 3-Point Entry, Zero-Low Lift Table permits the load to be placed on the table from three sides and raised close to the operator.

Zero-Low, 3-Point Entry Lift

- 1,000 & 2,500 lb. capacities, up to 48 in. lift height
- Loads can be placed on table from three sides
Fenderless table design permits pallet truck to enter table from any of three directions providing greatest versatility.
- Fenderless design also provides easier access by operator
Load can be raised to the operator without any fenders to reach over making lift table easier to use.
- Wide variety of deck sizes available to fit any size load
Decks available in 30x30, 36x36, 42x42, and 48x48 inch sizes.
- Double roller lifting chains give maximum platform stability.
Lifting table travels on rollers eliminating rubbing, friction and binding. Rollers are adjustable; level lifting is maintained at all times.
- Manual or electric operation
Power options are manual hydraulic hand pump, electric 120V AC single phase or 240/480V AC, 3 phase; with a choice of 120V push-button or foot-pedal control.
- Fenderless table design permits the load to be raised to the operator without any obstructions to reach over.
- Can be modified for increased lift heights and mezzanine access.



Pallet trucks can be easily rolled onto the lift table from any of three sides.

Capacity (lbs.)	Platform Size A x B (in.)	Lowered Height D (in.)	Vertical Lift C (in)	Overall Size A x G x E (in)	Model Number	
					Manually Operated	Electric Operated
1,000	30 x 30	1 1/2	48	30 x 52 x 54 1/2	ZL3PC-3030	ZL3PC-3030E
1,000	36 x 36	1 1/2	48	36 x 58 x 54 1/2	ZL3PC-3636	ZL3PC-3636E
1,000	42 x 42	1 1/2	48	42 x 64 x 54 1/2	ZL3PC-4242	ZL3PC-4242E
1,000	48 x 48	1 1/2	48	48 x 70 x 54 1/2	ZL3PC-4848	ZL3PC-4848E
2,500	30 x 30	2	48	30 x 52 x 54 1/2	ZL3PF-3030	ZL3PF-3030E
2,500	36 x 36	2	48	36 x 58 x 54 1/2	ZL3PF-3636	ZL3PF-3636E
2,500	42 x 42	2	48	42 x 64 x 54 1/2	ZL3PF-4242	ZL3PF-4242E
2,500	48 x 48	2	48	48 x 64 x 54 1/2	ZL3PF-4848	ZL3PF-4848E

Note: This unit must be fastened to the floor before use.

Hydraulic Lift Table

- 500 to 2,000 lb. capacities, up to 68 in. raised height.
- Highly versatile—ideal for a wide range of operations like lifting, feeding, accumulating, aligning and many other production and assembly operations.
- Hydraulic lift eases work and increases worker productivity.
- Hydraulic cylinders can be operated by manual pump, AC or DC motor, or non-sparking air motor.
- Wheels optional for added mobility, making it ideal for operations requiring frequent moving.
- Self-propelled units available. Walkie-type drive has 180° steering for making sharp turns. The self-propelled hydraulic drive pump also powers the lift, providing fast lift for high-production applications.
- All standard scissor lift tables have hydraulic lift up and gravity lowering. If lowering speed is required, then order optional Double Acting Power System—See pg. 25, option #14 for details.

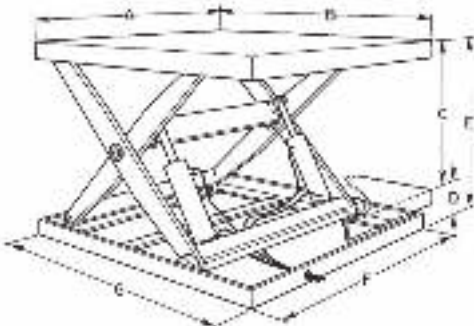


Model SLI-24860-E

Now Available in mechanical screw operation



Self-propelled lift table



Capacity (lbs.)	Table Size A x B (in.)	Vertical Travel C (in.)	Lowered Height D (in.)	Raised Height E (in.)	Base Size F x G (in.)	Model Number		
						Manually Operated	Electric Motor	Air Motor
500	*18 x 36	18	8	26	14 x 32	SLL-51836	SLL-51836E	SLL-51836A
500	32 x 54	30	8	38	26 x 48	SLL-53254	SLL-53254E	SLL-53254A
500	32 x 60	36	8	44	26 x 54	SLL-53260	SLL-53260E	SLL-53260A
500	32 x 66	40	8	48	26 x 60	SLL-53266	SLL-53266E	SLL-53266A
1,000	*24 x 36	18	8	26	18 x 32	SLL-12436	SLL-12436E	SLL-12436A
1,000	*32 x 48	24	8	32	26 x 42	SLL-13248	SLL-13248E	SLL-13248A
1,000	48 x 48	24	8	32	42 x 42	SLL-14848	SLL-14848E	SLL-14848A
1,000	24 x 54	30	8	38	18 x 48	SLL-12454	SLL-12454E	SLL-12454A
1,000	32 x 54	30	8	38	26 x 48	SLL-13254	SLL-13254E	SLL-13254A
1,000	48 x 60	36	8	44	42 x 54	SLL-14860	SLL-14860E	SLL-14860A
1,000	36 x 78	48	8	56	30 x 72	SLL-13678	SLL-13678E	SLL-13678A
1,000	48 x 84	52	8	60	42 x 78	SLL-14884	SLL-14884E	SLL-14884A
1,000	48 x 96	60	8	68	42 x 90	SLL-14896	SLL-14896E	SLL-14896A
2,000	*24 x 36	18	8	26	18 x 32	SLI-22436	SLI-22436E	SLI-22436A
2,000	*24 x 42	18	8	26	18 x 36	SLI-22442	SLI-22442E	SLI-22442A
2,000	*30 x 42	18	8	26	24 x 36	SLI-23042	SLI-23042E	SLI-23042A
2,000	*32 x 48	24	8	32	26 x 42	SLI-23248	SLI-23248E	SLI-23248A
2,000	48 x 48	24	8	32	42 x 42	SLI-24848	SLI-24848E	SLI-24848A
2,000	24 x 54	30	8	38	18 x 48	SLI-22454	SLI-22454E	SLI-22454A
2,000	32 x 54	30	8	38	26 x 48	SLI-23254	SLI-23254E	SLI-23254A
2,000	32 x 60	36	8	44	26 x 54	SLI-23260	SLI-23260E	SLI-23260S
2,000	36 x 66	40	8	48	30 x 60	SLI-23666	SLI-23666E	SLI-23666A
2,000	48 x 60	36	8	44	42 x 54	SLI-24860	SLI-24860E	SLI-24860A
2,000	48 x 72	44	8	52	42 x 66	SLI-24872	SLI-24872E	SLI-24872A
2,000	36 x 78	48	8	56	30 x 72	SLI-23678	SLI-23678E	SLI-23678A
2,000	48 x 78	48	8	56	42 x 72	SLI-24878	SLI-24878E	SLI-24878A
2,000	48 x 84	52	8	60	42 x 78	SLI-24884	SLI-24884E	SLI-24884A
2,000	48 x 96	60	8	68	42 x 90	SLI-24896	SLI-24896E	SLI-24896A

*Due to space limitations, these models require external (remote) power packs. Upgrades may also require remote power packs

Heavy-Duty Lift Table

- 4,000 to 20,000 lb. capacities, up to 74 in. raised height.
- Designed for heavier, bulkier loads.
- Up to 50,000 lb. capacity tables available.
- Increases productivity and safety all while reducing worker fatigue!
- Wheels optional for extra mobility and versatility. Ideal when table is frequently transferred from one location to another.
- Self-propelled units available. Walkie-type drive optional on all models.
- May be outfit with dock plate and guard rails for loading dock operation
- All standard scissor lift tables have hydraulic lift up and gravity lowering. If lowering speed is required, then order optional Double Acting Power System-See pg. 25, option #14 for details.

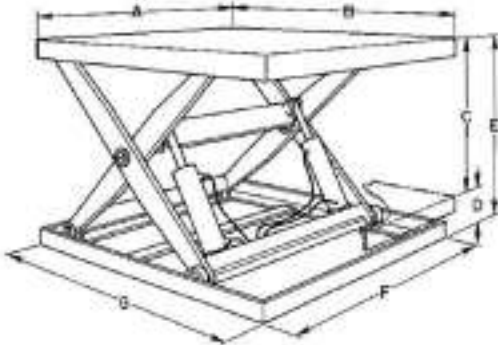


Heavy-Duty Lift Table
Model SLH-64872-E

Bring the big jobs down to size - easy lifting of heavier loads.



Intermediate Lift Table with optional roller conveyor and powered rotation.



*Due to space limitations, these models require external (remote) power packs. Upgrades may also require remote power packs

Capacity (lbs.)	Table Size A x B (in.)	Vertical Travel C (in.)	Lowered Height D (in.)	Raised Height E (in.)	Base Size F x G (in.)	Model Number	
						Electric Motor	Air Motor
4,000	48 x 48	24	8	32	42 x 42	SLI-44848E	SLI-44848A
4,000	24 x 54	30	8	38	18 x 48	SLI-42454E	SLI-42454A
4,000	48 x 60	36	8	44	42 x 54	SLI-44860E	SLI-44860A
4,000	36 x 66	40	8	48	30 x 60	SLI-43666E	SLI-43666A
4,000	48 x 72	44	8	52	42 x 66	SLI-44872E	SLI-44872A
4,000	48 x 78	48	8	56	42 x 72	SLI-44878E	SLI-44878A
4,000	48 x 84	52	8	60	42 x 78	SLI-44884E	SLI-44884A
4,000	48 x 96	60	8	68	42 x 90	SLI-44896E	SLI-44896A
6,000	32 x 54	30	8	38	26 x 48	SLI-63254E	SLI-63254A
6,000	48 x 48	24	8	32	42 x 42	SLI-64848E	SLI-64848A
6,000	48 x 60	36	8	44	42 x 54	SLI-64860E	SLI-64860A
6,000	48 x 72	44	8	52	42 x 66	SLH-64872E	SLH-64872A
6,000	48 x 96	60	10	70	42 x 90	SLH-64896E	SLH-64896A
6,000	60 x 102	60	10	70	54 x 96	SLH-660102E	SLH-660102A
6,000	72 x 102	60	10	70	66 x 96	SLH-672102E	SLH-672102A
8,000	*36 x 66	38	10	48	30 x 60	SLH-83666E	SLH-83666A
8,000	*48 x 78	46	10	56	42 x 72	SLH-84878E	SLH-84878A
8,000	*48 x 84	52	10	62	42 x 78	SLH-84884E	SLH-84884A
8,000	*48 x 96	58	10	68	42 x 90	SLH-84896E	SLH-84896A
8,000	*72 x 102	60	10	70	66 x 96	SLH-872102E	SLH-872102A
10,000	*36 x 66	38	10	48	30 x 60	SLH-103666E	SLH-103666A
10,000	*48 x 78	46	10	56	42 x 72	SLH-104878E	SLH-104878A
10,000	*48 x 84	52	10	62	42 x 78	SLH-104884E	SLH-104884A
10,000	*48 x 96	58	10	68	42 x 90	SLH-104896E	SLH-104896A
10,000	*72 x 102	60	10	70	66 x 96	SLH-1072102E	SLH-1072102A
15,000	*48 x 72	38	10	48	42 x 66	SLH-154872E	SLH-154872A
15,000	*48 x 78	46	10	56	42 x 72	SLH-154878E	SLH-154878A
15,000	*48 x 84	50	10	60	42 x 78	SLH-154884E	SLH-154884A
15,000	*48 x 96	56	10	66	42 x 90	SLH-154896E	SLH-154896A
15,000	*48 x 102	60	10	70	42 x 96	SLH-1548102E	SLH-1548102A
15,000	*60 x 102	60	10	70	54 x 96	SLH-1560102E	SLH-1560102A
15,000	*72 x 102	60	10	70	66 x 96	SLH-1572102E	SLH-1572102A
20,000	*48 x 78	44	12	56	42 x 72	SLXH-204878E	SLXH-204878A
20,000	48 x 84	48	12	60	42 x 78	SLXH-204884E	SLXH-204884A
20,000	48 x 96	54	12	66	42 x 90	SLXH-204896E	SLXH-204896A
20,000	48 x 102	60	14	74	42 x 96	SLXH-2048102E	SLXH-2048102A
20,000	60 x 102	60	14	74	54 x 96	SLXH-2060102E	SLXH-2060102A
20,000	72 x 102	60	14	74	66 x 96	SLXH-2072102E	SLXH-2072102A

Die Handling System

- Simplify die and mold installation and retrieval
- Heavy duty die and mold system is self-loading and unloading, capable of loading heavy dies into a press effortlessly by one person safely and efficiently
- Unique new design features two short and two long arms to push the die onto the press and pull it out onto the Die Table.
- The unit is mobile, manually propelled for lighter dies or self-propelled walkie drive for heavier systems.
- Capacity available from 1000 lbs to 50,000 lbs and a variety of sizes and lifting heights, including the capability of storing dies at multi-level height shelving.
- Lifting and push-pull actions are hydraulically operated and electrically powered either plug-in AC or self-contained DC power.
- The Die Handling System is a unique ergonomic tool making any die or mold handling process easier, faster, and **SAFER**.



Manually propelled light duty Die Table

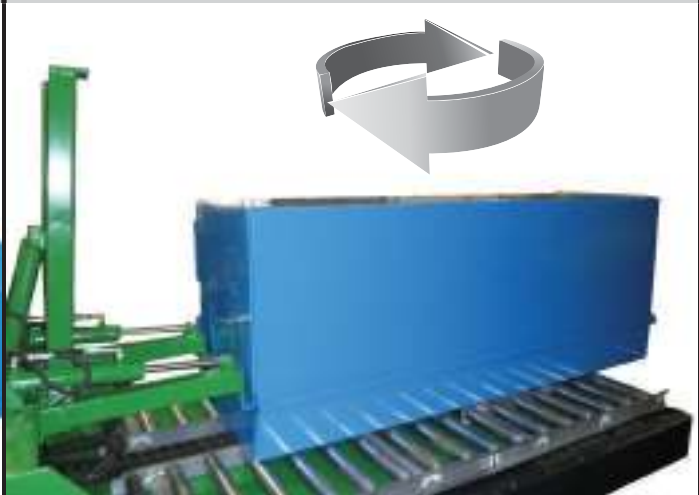


Self-Propelled Die Table

Die shown in cross-wise position preparing to install into press



Optional Die Rotation – position lengthwise for mobility and storage, then rotate cross-wise for installation into press



Mechanical Lift Table

- Ergonomic work positioning and optional butcher block platform
- The lift action is acme screw operated, either manually or electrically powered
- More economical models available with cable winch operation
- The new lift system prevents drifting and alleviates potential for hydraulic leaks for cleaner operation
- Units can be stationary or mobile on phenolic non-marking wheels
- The power options available are 120V AC single-phase, 240/480V AC 3-phase, or 12/24V DC. Air powered spark proof operation is also available.
- Variety of sizes available and capacities from 250 to 1000 lbs.



Hand crank operated screw table



ACME screw operated units can be operated via air or electric impact wrench or manual ratchet



Mechanical Scissor Lift with optional butcher block top



Mechanical Scissor Lift with cable winch style lift operation



Cap (lbs)	Platform Size	Lowered Height		Travel	Raised Height		Manual Winch Type		Manual Acme Screw		Ratchet Style Acme	
		w/o wheels	w/ wheels		w/o wheels	w/ wheels	Metal Plate	Butcher Block	Metal Plate	Butcher Block	Metal Plate	Butcher Block
250	24" x 36"	10"	17.5"	20"	30"	37.5"	MLTM-22436-W	MLTB-22436-W	MLTM-22436-A	MLTB-22436-A	MLTM-22436-R	MLTB-22436-R
250	24" x 48"	10"	17.5"	30"	40"	47.5"	MLTM-22448-W	MLTB-22448-W	MLTM-22448-A	MLTB-22448-A	MLTM-22448-R	MLTB-22448-R
250	30" x 48"	10"	17.5"	30"	40"	47.5"	MLTM-23048-W	MLTB-23048-W	MLTM-23048-A	MLTB-23048-A	MLTM-23048-R	MLTB-23048-R
250	36" x 60"	12"	19.5"	38"	50"	57.5"	MLTM-23660-W	MLTB-23660-W	MLTM-23660-A	MLTB-23660-A	-	-
250	36" x 72"	12"	19.5"	46"	58"	65.5"	MLTM-23672-W	MLTB-23672-W	MLTM-23672-A	MLTB-23672-A	-	-
500	24" x 36"	10"	17.5"	20"	30"	37.5"	MLTM-52436-W	MLTB-52436-W	MLTM-52436-A	MLTB-52436-A	-	-
500	24" x 48"	10"	17.5"	30"	40"	47.5"	MLTM-52448-W	MLTB-52448-W	MLTM-52448-A	MLTB-52448-A	-	-
500	36" x 60"	12"	19.5"	38"	50"	57.5"	MLTM-53660-W	MLTB-53660-W	MLTM-53660-A	MLTB-53660-A	-	-
500	36" x 72"	12"	19.5"	46"	58"	65.5"	MLTM-53672-W	MLTB-53672-W	MLTM-53672-A	MLTB-53672-A	-	-
1000	24" x 48"	10"	17.5"	30"	40"	47.5"	MLTM-12448-W	MLTB-12448-W	MLTM-12448-A	MLTB-12448-A	-	-
1000	30" x 48"	10"	17.5"	30"	40"	47.5"	MLTM-13048-W	MLTB-13048-W	MLTM-13048-A	MLTB-13048-A	-	-
1000	36" x 60"	12"	19.5"	38"	50"	57.5"	MLTM-13660-W	MLTB-13660-W	MLTM-13660-A	MLTB-13660-A	-	-
1000	36" x 72"	12"	19.5"	46"	58"	65.5"	MLTM-13672-W	MLTB-13672-W	MLTM-13672-A	MLTB-13672-A	-	-
1000	36" x 96"	12"	19.5"	64"	76"	83.5"	MLTM-13696-W	MLTB-13696-W	MLTM-13696-A	MLTB-13696-A	-	-

**NOTE: add -W to model name for wheels option. Add -E for 120V AC electric option.

Mini Scissor Lift Table

- Available up to 250 pound capacity and up to 70" raised height.
- Designed for smooth, quiet, and efficient operation.
- Electro-mechanically operated: no drift, no leakage (does not apply to hydraulically operated units).
- 120V AC single phase models are designed for intermittent 25% duty cycle. Battery operated 12V or 24V DC units have 60% duty cycle.
- Unit is extremely compact, yet offers higher lift with double scissor model.
- Available with casters for mobility.
- Low profile turntable option also available



Model DMSL-1824E



Model MSL-A1519B



Light & Portable!

Capacity (lbs.)	Table Size (in.)	Lowered Height (in.)	Vertical Travel (in.)	Raised Height (in.)	Model Number		
					Electric 120V	Battery 12V or 24V DC	Electro-hydraulic 120V
50	10 x 12	3	6	9	MMSL-A1012E	MMSL-A1012B	-
250	15 x 19	4	12	16	MSL-A1519E	MSL-A1519B	MSL-A1519H
250	18 x 24	5	15	20	MSL-A1824E	MSL-A1824B	MSL-A1824H
250	20 x 30	5	19	24	MSL-A2030E	MSL-A2030B	MSL-A2030H
250	24 x 36	5	22	27	MSL-A2436E	MSL-A2436B	MSL-A2436H
250	24 x 48	6	30	36	MSL-A2448E	MSL-A2448B	MSL-A2448H
150	15 x 19	6	24	30	DMSL-1519E	DMSL-1519B	DMSL-1519H
150	18 x 24	6	32	38	DMSL-1824E	DMSL-1824B	DMSL-1824H
150	20 x 30	7	40	47	DMSL-2030E	DMSL-2030B	DMSL-2030H
150	24 x 36	7	48	55	DMSL-2436E	DMSL-2436B	DMSL-2436H
150	24 x 48	7	63	70	DMSL-2448E	DMSL-2448B	DMSL-2448H

*Electro-hydraulic units, denoted by the 'H', require a remote powerpack.

Lift & position long or large loads effortlessly!

Tandem Scissor Lift Table

- 2,000 to 50,000 lb. capacities available.
- Raised height up to 8 feet.
- Length up to 20 feet.
- Perfect for handling large sheets of material like aluminum, plastics, bar stock or tubular materials.
- Heavy-duty construction with pressure relief valve to prevent overloading.

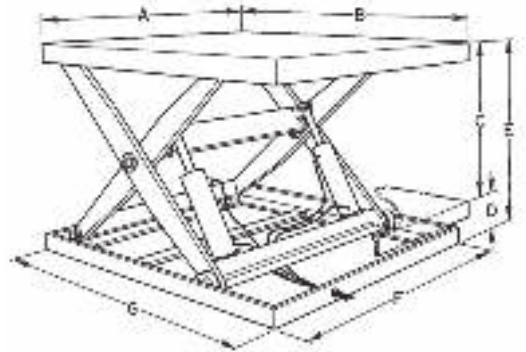


Low-profile self-propelled drive systems available with joystick remote control



Model SLTD-1048144-E

Capacity (lbs.)	Table Size A x B (in.)	Vertical Travel C (in.)	Lowered Height D (in.)	Raised Height E (in.)	Model Number		
					Manually Operated	Electric Motor	Air Motor
2,000	36 x 120	34	10	44	SLTD-236120	SLTD-236120E	SLTD-236120A
2,000	48 x 144	46	10	56	SLTD-248144	SLTD-248144E	SLTD-248144A
4,000	48 x 144	46	10	56	-	SLTD-448144E	SLTD-448144A
4,000	60 x 192	58	10	68	-	SLTD-460192E	SLTD-460192A
6,000	48 x 144	44	12	56	-	SLTD-648144E	SLTD-648144A
6,000	60 x 192	56	12	68	-	SLTD-660192E	SLTD-660192A
10,000	48 x 144	44	12	56	-	SLTD-1048144E	SLTD-1048144A
10,000	60 x 192	56	12	66	-	SLTD-1060192E	SLTD-1060192A
10,000	72 x 240	76	12	88	-	SLTD-1072240E	SLTD-1072240A
20,000	48 x 144	42	14	56	-	SLTD-2048144E	SLTD-2048144A
20,000	60 x 192	54	14	68	-	SLTD-2060192E	SLTD-2060192A
20,000	72 x 240	74	14	88	-	SLTD-2072240E	SLTD-2072240A
50,000	48 x 144	40	16	56	-	SLTD-5048144E	SLTD-5048144A
50,000	60 x 192	52	16	68	-	SLTD-5060192E	SLTD-5060192A
50,000	72 x 240	72	16	88	-	SLTD-5072240E	SLTD-5072240A



Note: When wheels are added, lowered height is increased by at least one inch; overall length also increases by "X". Please consult factory. Power system upgrades may require remote power packs

Double Scissor Lift Table

- 500 to 10,000 lb. capacities.
- Raised height up to 108 inches.
- Increased lift height at low cost.
- These stock tables often eliminate the need for custom designed equipment.
- Durable construction for long, trouble free use. Heavy-duty, welded steel construction with reinforcing ribs for extra rigidity on larger models.
- All standard scissor lift tables have hydraulic lift up and gravity lowering. If lowering speed is required, then order optional Double Acting Power System-See pg. 25, option #14 for details.

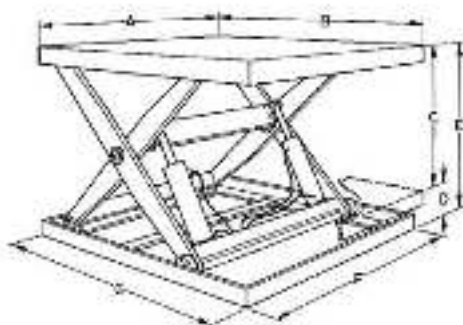


High-Density Storage and Retrieval System



Model DSL-44878-E

For **lifts**
higher
in confined areas.



Capacity (lbs.)	Table Size A x B (in.)	Vertical Travel C (in.)	Lowered Height D (in.)	Raised Height E (in.)	Base Size F x G (in.)	Model Number		
						Manually Operated	Electric Motor	Air Motor
500	*18 x 36	36	8	44	14 x 32	DSL-51836	DSL-51836E	DSL-51836A
1,000	*24 x 36	32	10	42	18 x 30	DSL-12436	DSL-12436E	DSL-12436A
1,000	*32 x 42	36	10	46	26 x 36	DSL-13242	DSL-13242E	DSL-13242A
2,000	32 x 48	48	12	60	26 x 42	DSL-23248	DSL-23248E	DSL-23248A
2,000	32 x 60	68	12	80	26 x 54	DSL-23260	DSL-23260E	DSL-23260A
2,000	36 x 78	96	12	108	30 x 72	DSL-23678	DSL-23678E	DSL-23678A
4,000	32 x 48	48	12	60	26 x 42	-	DSL-43248E	DSL-43248A
4,000	42 x 60	68	12	80	36 x 54	-	DSL-44260E	DSL-44260A
4,000	48 x 78	96	12	108	42 x 72	-	DSL-44878E	DSL-44878A
6,000	32 x 60	70	12	82	26 x 54	-	DSL-63260E	DSL-63260A
6,000	48 x 78	96	12	108	42 x 72	-	DSL-64878E	DSL-64878A
6,000	72 x 102	94	16	110	66 x 96	-	DSL-672102E	DSL-672102A
10,000	48 x 78	92	16	108	42 x 72	-	DSL-104878E	DSL-104878A
10,000	72 x 102	94	16	110	66 x 96	-	DSL-1072102E	DSL-1072102A

*Due to space limitations, these models require external (remote) power packs. Upgrades may also require remote power packs

Lift & Tilt Table

- 1,000 to 10,000 lb. capacities, up to 60 in. raised height.
- Table tilts up to 45 degrees for load handling ease. 60 to 90 degree tilt modifications are available – consult factory.
- Use for easy assembly of large panels. The unit is ergonomically designed to bring and position the item for optimal worker alignment which improves visibility, performance and safety.
- Hydraulic power source and control remotely located.
- 8 in. retaining plate standard—Larger retaining plates are available.
- Outriggers available for added stability (required on mobile tables with 90° tilt).



Model SLTT-4A00-E



Length Tilt

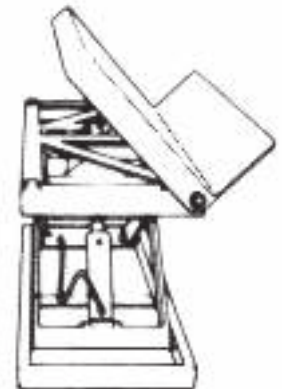
Model SLTT-2B00-E

Lift & tilt

the load, just the way you want it.



Capacity (lbs.)	Table Size A x B (in.)	Vertical Travel C (in.)	Lowered Height D (in.)	Raised Height E (in.)	Base Size F x G (in.)	Model Number			
						Sideways Tilt		Lengthwise Tilt	
						Electric Motor	Air Motor	Electric Motor	Air Motor
1,000	*24 x 48	24	10	34	27.5 x 42	SLTT-1A00E	SLTT-1A00A	SLTT-1B00E	SLTT-1B00A
2,000	*24 x 54	30	10	40	27.5 x 48	SLTT-2A00E	SLTT-2A00A	SLTT-2B00E	SLTT-2B00A
4,000	32 x 66	32	10	42	35.5 x 60	SLTT-4A00E	SLTT-4A00A	SLTT-4B00E	SLTT-4B00A
6,000	36 x 60	32	12	44	39.5 x 54	SLTT-6A00E	SLTT-6A00A	SLTT-6B00E	SLTT-6B00A
6,000	48 x 78	40	12	52	51.5 x 72	SLTT-6A48E	SLTT-6A48A	SLTT-6B48E	SLTT-6B48A
6,000	72 x 102	48	12	60	75.5 x 96	SLTT-6A72E	SLTT-6A72A	SLTT-6B72E	SLTT-6B72A
8,000	36 x 66	32	14	46	39.5 x 62	SLTT-8A00E	SLTT-8A00A	SLTT-8B00E	SLTT-8B00A
8,000	48 x 78	40	14	54	51.5 x 72	SLTT-8A48E	SLTT-8A48A	SLTT-8B48E	SLTT-8B48A
10,000	48 x 78	40	14	54	51.5 x 72	SLTT-1A000E	SLTT-1A000A	SLTT-1B000E	SLTT-1B000A
10,000	60 x 102	48	14	62	63.5 x 96	SLTT-1A060E	SLTT-1A060A	SLTT-1B060E	SLTT-1B060A
10,000	72 x 102	48	14	62	75.5 x 96	SLTT-1A072E	SLTT-1A072A	SLTT-1B072E	SLTT-1B072A



Side Tilt

This unit must be fastened to floor before use. Rated capacity is up to 45° tilt. Capacity drops 50% on tilts greater than 45° and up to 75% at 90° tilt. Base size dimension includes bolt-down tabs.

*Due to space limitations, these models require external (remote) power packs. Upgrades may also require remote power packs

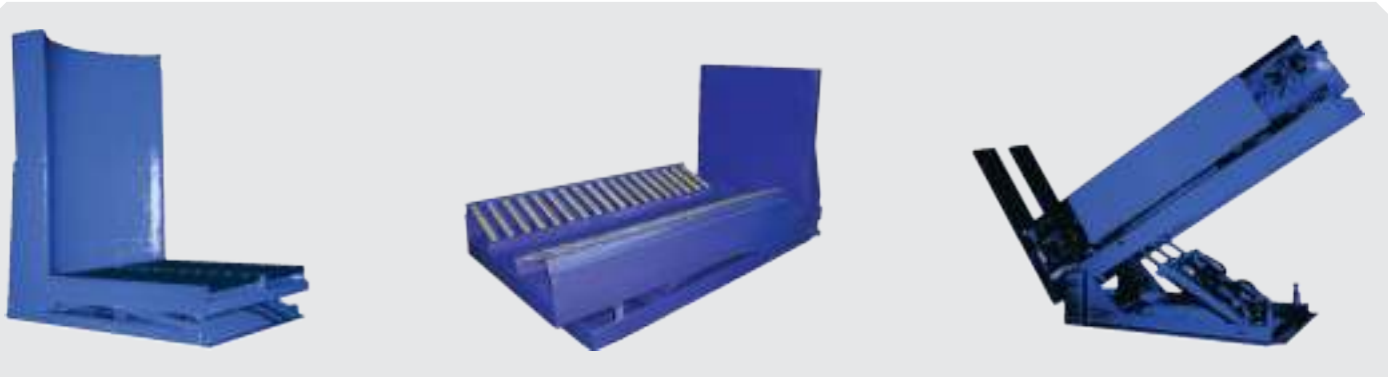
Crate Positioner

- 2,000 to 10,000 lb. capacities.
- Various table top configurations available. Standard table used to reposition boxes, crates and other containers,
- V-shaped or round top used for upending coils or rolls.
- Ideal for repositioning in conveyor systems.
- Because it can function as an upender or inverter, it's perfect for various types of operations.
- Tilts lengthwise—up to 90° making the worker's job easier and more efficient. Ideal for upending crates or boxes and for packing or unpacking.
- Standard retaining plate is 24 in. high to handle most items; larger retaining plates are available upon request.
- Optional pedestal frame available to raise deck to any height needed.

Safely **reposition** loads of various shapes & sizes.



Model SCP-4000E

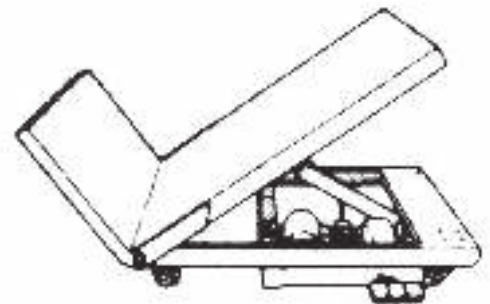


ROUND TABLE

V-SHAPED TABLE WITH CONVEYORS

CONVEYOR TOP TABLE

Capacity (lbs.)	Table Size (in.)	Lowered Height (in.)	Model Number		
			Manually Operated	Electric Motor	Air Motor
2,000	*24 × 48	8	SCP-2000	SCP-2000E	SCP-2000A
4,000	32 × 60	8	SCP-4000	SCP-4000E	SCP-4000A
6,000	36 × 60	10	-	SCP-6000E	SCP-6000A
6,000	48 × 72	10	-	SCP-6048E	SCP-6048A
6,000	72 × 96	10	-	SCP-6072E	SCP-6072A
8,000	36 × 60	10	-	SCP-8000E	SCP-8000A
8,000	48 × 72	10	-	SCP-8048E	SCP-8048A
10,000	48 × 72	10	-	SCP-10000E	SCP-10000A
10,000	60 × 96	12	-	SCP-10060E	SCP-10060A
10,000	72 × 96	12	-	SCP-10072E	SCP-10072A



Note: This unit must be fastened to floor before use.

*Due to space limitations, these models require external (remote) power packs. Upgrades may also require remote power packs

Maintenance Lift

- 1,000 to 2,000 lb. capacities.
- Up to 144 in. height.
- Pivoted steering handle with two swivel casters and two rigid wheels for maneuverability.
- Positive-action floor locks prevent movement.
- Work platform enclosed for worker safety. Includes guardrail with entry safety chain.
- Remote control is available on all models.
- Optional platform extension available

Safely raise
personnel up to
12 feet!



Model MLI-1000-E



Capacity (lbs.)	Deck Size (in.)	Vertical Travel (in.)	Lowered Height (in.)	Raised Height (in.)	Model Number			
					Electric Motor	Air Motor	Gas Engine	LPG Engine
1,000	32 x 60	120	24	144	MLI-1000-E	MLI-1000-A	MLI-1000-G	MLI-1000-LP
1,500	32 x 60	76	20	96	MLI-1500-E	MLI-1500-A	MLI-1500-G	MLI-1500-LP
2,000	32 x 60	40	16	56	MLI-2000-E	MLI-2000-A	MLI-2000-G	MLI-2000-LP

Maintenance Lifts are for lifting people not materials.

Add Versatility to your Lift Tables.

Lift Table Options





1. Hydraulic Power Options - Standard electric motor furnished is 1 HP, 120V AC. Optional motors are 240V AC, single phase; 240/480V AC, 3-phase; all with 120V AC controls. Larger motors—2, 3, 5, 7.5, and 10 HP.—are available on larger tables for increased lift speed. Higher horsepower motors may have to be external to table; consult factory.

- **Optional Air Motor** - Available on all ATI tables and maintenance lifts, the optional air motor can be plugged into any standard compressed air line. It meets safety requirements for operation in hazardous atmospheres where non-sparking equipment must be used.

- **Washdown Motor** - Designed for extended life in applications requiring regular washdown, such as food processing or other wet, high-humidity environments. Extra protection for the motor's interior using Rust-Oleum® coatings prevents rust and corrosion build-up.

2. Automatic Height Gauge - (Model AHG-1). Keeps table at constant, predetermined level. When sheet or other material is removed, the table raises; when material is added, table lowers. Operates by electric eye sensor for accurate gauge adjustments from 8 to 56 in. Automatic adjustment up or down. Selector switch used to select up or down movement. Can be configured as a single-beam safety feature on Zero-Low models.

3. Wheel Options - Wheels are available on all ATI tables. Standard wheels are phenolic or polyurethane and are mounted outside the table base. A pivoting handle and dual swivel rear wheels are used for steering. Adding wheels increases lowered and raised table heights by 1 in. Wheels can also be mounted underneath the table base which raises table height by 8 in. Solid rubber wheels are available for outdoor use or where floors require extra protection. Standard wheel packages include floor lock. Wheel upgrades are available for swivel locks and/or wheel brakes. Wheel package is considered a modification on Zero-Low models.

4. Safety Skirts - Safety skirts are designed to shield the operator of a table from the lifting and tilting mechanisms. In addition, the safety skirts extend the service life of machines by shielding the internal mechanisms from operational debris. Skirts are manufactured from tough, extra heavy duty, 23-ounce vinyl coated polyester that will expand and compress with the movement of the machine regardless of vertical, horizontal or angular change in position. Skirts are mounted either inside or outside of table top using velcro adhesive for ease of maintenance and access to unit.

5. Toe guard - This flexible polyurethane toe guard lip adds safety to any Zero-Low style table. The lip protrudes beyond the lifting platform to guard against the platform lowering on a worker's foot.

6. Powered Table Controls - On tables equipped with electric power, there are three control options: (A) Free-standing pedestal control; (B) Foot-operated remote control; and (C) Push button remote control. Wireless remote controls available.

7. Self-Propelled Drives - When maximum mobility and versatility is required, a self-propelled drive unit can be coupled with any lift table. The battery powered self-propelled drive is equipped with

variable speeds up to 4 mph and has 180° steering capability, 90° to each side offering remarkable maneuverability in crowded areas. It is equipped with a two-position, spring loaded mechanical brake and a safety belly-button switch. The horn and lifting function controls are built into the steering handle for convenient operation.

8. Rotating Table Top - Best suited for material redirection operations such as conveyor systems and transfer applications. Available in manual or hydraulic powered 360° rotation for automatic system operation.

9. Conveyor Table Top - Ideal in situations where transferring loads across the table is required.

10. Coatings - Zinc metalizing, Steel-It paint, epoxy paint and similar coatings are available for an extra charge. Consult factory.

Other Options (not shown)

11. Limit Switches/ Proximity Sensors - Perfect when a precise lifting height is required repeatedly, our limit switch is compact, reliable and accurate.

12. Custom Painting - All units come with industrial enamel gloss paint in ATI's standard yellow or blue. Custom requests accepted for additional setup fee and cost of paint.

13. Custom Designing - ATI offers a broad line of 2,500 products to address most needs however we recognize that occasion-ally your needs may be very unique. In those instances, our engineers can design equipment that will solve your specific material handling requirement. Consult factory for details.

14. Double Acting Power System (Models ATI-D/A-2, 3, 4, 6, & 8 number of cylinders) - All tables are equipped with a single acting power system which powers up the system and uses gravity feed down. A Double acting power system is perfect when precise control over downward speed is required as in conveyor and material transfer applications. Lift cylinders are powered down to achieve at least equivalent speed of upward cycle.

15. Heavy Duty Cycle Package (Model HDPC) - For high-frequency applications where a unit is used more than 16 cycles per 8-hour shift, a heavy duty cycle package is recommended. Self-lubricating composite bushings at pivot points of scissors, rollers secured with fiber bushings and grease fittings on the cylinder all work together to extend the life of the table.

16. Extra Heavy Duty Cycle Package (Model EHDCP) - For continuous duty applications where a unit is used more than 24 cycles per 8-hour shift, an extra heavy duty cycle package is recommended. Lifetime composite bushings at pivot points of scissors, the use of cam followers, and grease fittings on the cylinder and key pivot points all work together to accommodate continuous duty applications. Further, the shaft on the rollers can be easily replaced when worn out to ensure years of trouble free operation.

17 Automatic Sequencing - PLC controls are available for systems integration or automatic sequencing of lift operations

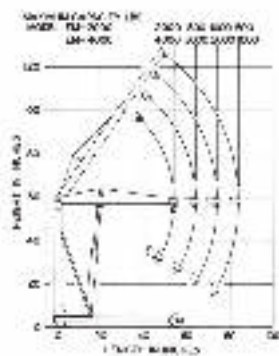
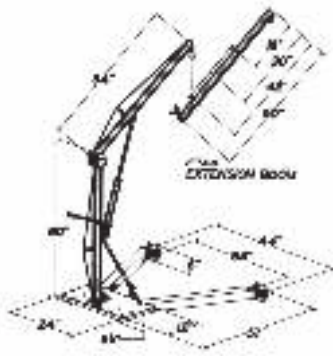
V-Master

- 1,000 lb. lifting capacity, up to 8 ft. lift height.
- Versatile and economical. Provides easy lifting in shops, plants, garages, warehouses, construction sites, and many other locations where loads must be lifted, loaded, assembled, or positioned.
- Quick & easy disassembly for transportation or storage.
- Unique design, disassembles in two minutes for transporting to another area or for compact storage.
- Designed for safety and durability.
- Quality-crafted from the finest materials.



Model VM-1000

The perfect "carry-on"



MODEL NUMBER	VM-1000
Capacity (lbs)	1,000
Maximum lift height (ft.)	8
With extension boom	11
Reach (ft)	4
With extension boom	7
Floor to hook height with boom lowered (in)	32
Overall mast height	60
Maximum lift height (in)	96
With extension boom	132
Boom length (in)	54
With extension boom	96
Overall width - Standard wheelbase (in)	44
Width inside wheelbase - Standard wheelbase (in)	34
Overall length (in)	57
Weight (lbs)	150

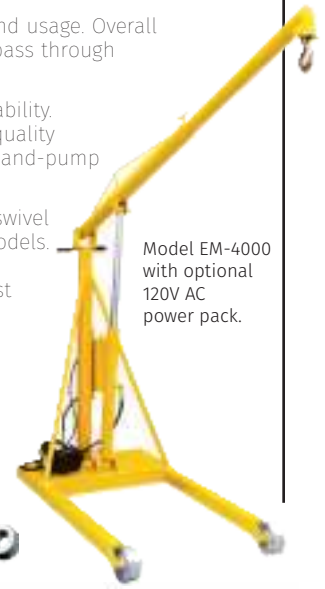
*Specifications are for standard manual units.

Accessories & Attachments

1. **8' Extension Boom** - Model VM-1000-EB8. For extra reach. Counterweights of (a)350, (b)250 and (c)150 lbs. respectively are required. It must be secured to base when loaded to achieve maximum capacity of 500 lbs. Counterweight not included.
2. **Wide-Legged Wheelbase** - Model VM-1000-W. Perfect for straddling large loads. 48" between legs.
3. **Narrow-Legged Wheelbase** - Model VM-1000-N. For easy travel in narrow spaces. 24" between legs and 32" overall width.
4. **Manual winch cable lift** - Model VM-C-1.
5. **Powered winch cable lift** - Model VM-PEC-1.

Econo-Master

- 2,000 to 6,000 lb. capacities, up to 10 ft. lift height.
- Remarkable low cost—best value available. Still has many features found on more expensive cranes.
- Narrow width for increased mobility and usage. Overall width of only 34 in. enables crane to pass through doorways and work in aisles.
- Designed and built for safety and durability. Heavy-duty lifting cylinder; built with quality materials and workmanship. Manual hand-pump hydraulic operation is standard.
- Wheels provide needed mobility. Two swivel casters and two rigid wheels on all models. The EM-6000 includes pivoting towing steering handle that folds against mast when not in use.
- Telescopic boom for maximum usage provides extra reach when needed (at reduced lifting capacity).
- Optional powered lifting cylinder available in 12V DC battery, 120V AC or air powered.



Model EM-4000 with optional 120V AC power pack.



MODEL NUMBER	EM-2000	EM-4000	EM-6000
Powered Lifting Cylinder			
Battery Operated	EM-PB-2	EM-PB-4	EM-PB-6
110-VAC Operated	EM-PE-2	EM-PE-4	EM-PE-6
Air Operated	EM-AP-2	EM-AP-4	EM-AP-6
Barrel Lifter / Dumper			
Manual (Free rotation)	EM-BLD-1	EM-BLD-1	EM-BLD-1
Handcrank	EM-BLD-2	EM-BLD-2	EM-BLD-2

MODEL NUMBER	EM-2000	EM-4000	EM-6000
Capacity (lbs.), boom retracted	2,000	4,000	6,000
Capacity (lbs.), boom extended	500	1,000	1,500
Max. lift height (ft.)			
Boom retracted	8	8	8
Boom extended	10.5	10.5	10.5
Floor-to-hook height (in.)			
Boom retracted	36	24	34
Boom extended	24	20	18
Maximum reach (in.)	60	60	74
Maximum reach beyond wheels (in.)	24	24	34
Mast height (in.)	60	60	68
Boom length (in.) Adjustable	54, 64, 74, 84		54, 64, 74, 84, 94
Overall length (in.)	60	60	64
Overall width (in.)	34	34	34
Width inside wheelbase (in.)	26	26	25
Casters:			
Rigid (two)	6 x 2	6 x 2.5	8 x 2.5
Swivel (two)	4 x 1.5	4 x 1.5	6 x 2
Shipping weight (approx. lbs.)	250	300	350

*Specifications are for standard manual units. **Note:** Counterweights of approximately 200 lbs.(EM-2000), 400 lbs.(EM-4000), or 600 lbs.(EM-6000) should be added and fastened securely to the base when loaded to the maximum capacities at the boom lengths shown in the chart. Counterweights not included.

The Husky-Master

Husky-Master

- 2,000 to 6,000 lb. capacities, up to 12 ft. lift height.
- Designed for heavy-duty lifting, loading and positioning. Its rugged construction will give dependable, long-lasting use. Models HM-4000 and HM-6000 are of heavy construction with additional reinforcing at stress points and a reinforcing rib inside the telescopic boom section.
- Manual and hand-pump hydraulic operation is standard. Powered lifting cylinder available in electric, either battery or 120V AC or air powered.
- See page 29 for crane options.

Built tough for heavy-duty lifting
a workhorse of a crane!



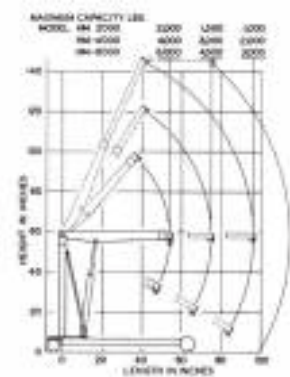
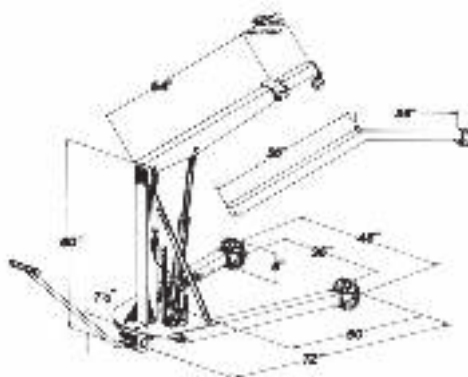
Model HM-2000



Shown with optional self-propelled drive and optional telescopic boom.

MODEL NUMBER	HM-2000	HM-4000	HM-6000
Capacity (lbs.)			
With boom retracted	2,000	4,000	6,000
With boom extended	1,000	2,000	3,000
Maximum lift height (in.)			
With boom retracted	8	8	8
With boom extended	12	12	12
Floor to hook height (in.)			
With boom retracted	30	30	30
With boom extended	18	18	18
Maximum reach (in.)	78	78	78
Maximum reach beyond wheels (in.)	36	36	36
Mast height (in.)	60	60	60
Boom Length (in.) Adjustable	54-96	54-96	54-96
Overall length (in.)	72	72	72
Overall width (in.)	46	46	48
Width inside wheelbase (in.)	36	36	34
Casters			
Rigid (two)	8 x 2.5	8 x 2.5	8 x 2.5 DUAL
Swivel (two)	6 x 2	6 x 2	6 x 2
Shipping Weight (APPROX lbs.)	500	600	800

*SPECIFICATIONS



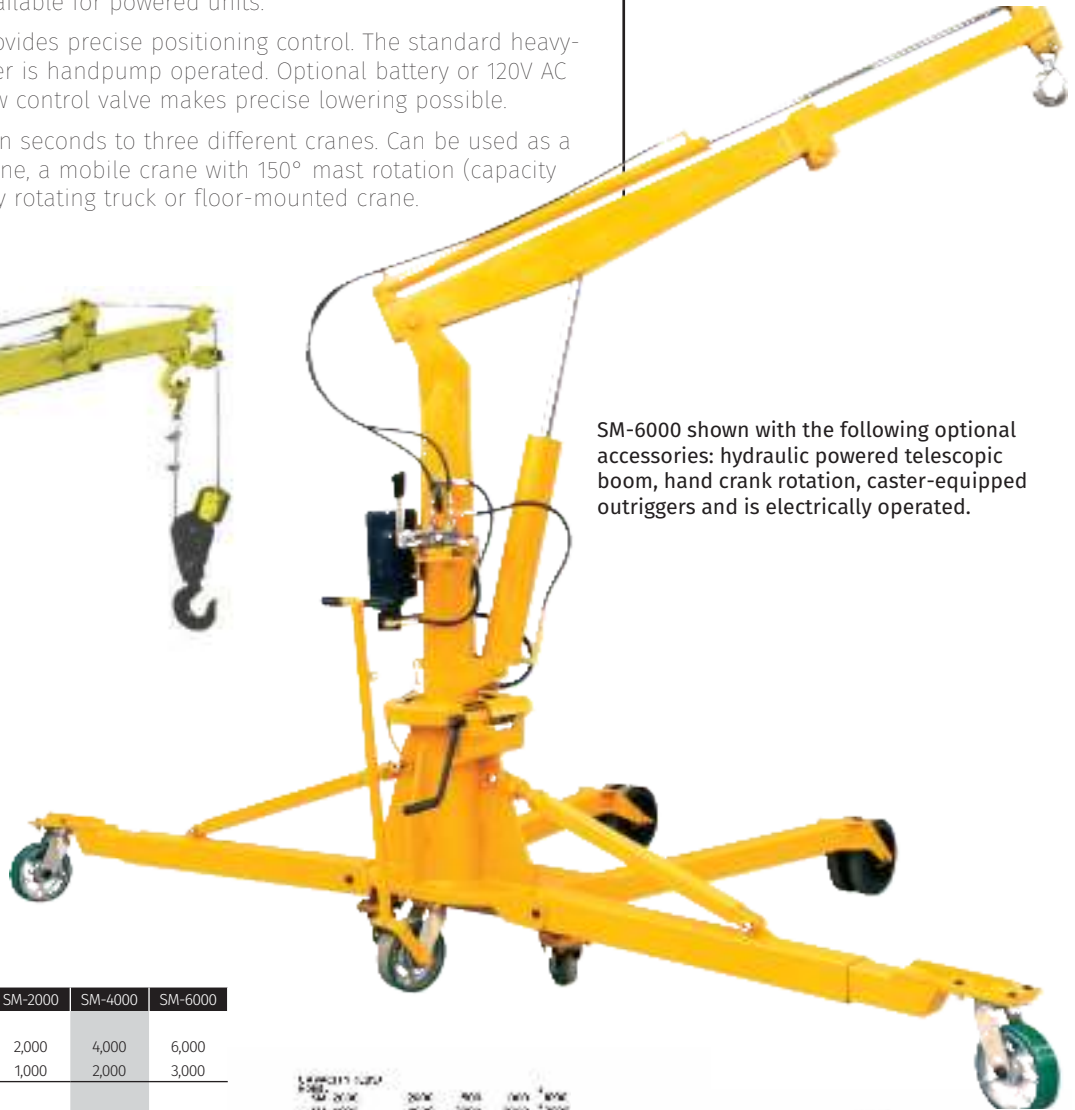
*Specifications are for standard manual units. **Note:** Counterweights of approximately 150 lbs. per foot of boom extension, per 1000 lbs. of load must be secured to base when loaded to achieve maximum capacity. Counterweights not included.

Super-Master

- 2,000 to 6,000 lb. capacities, up to 13 ft. lift height.
- Remarkable versatility for wide range of jobs with many optional features. Ideal crane for all material handling jobs above or below ground level, on truck, dock and other locations, and as a precise, fully-articulating crane.
- Designed for easy movement from job to job. Large diameter poly wheels and steerable swivel caster make positioning easy.
- Remote electric controls available for powered units.
- Hydraulic lifting cylinder provides precise positioning control. The standard heavy-duty hydraulic lifting cylinder is handpump operated. Optional battery or 120V AC power is available. Microflow control valve makes precise lowering possible.
- A unique design—converts in seconds to three different cranes. Can be used as a standard hydraulic floor crane, a mobile crane with 150° mast rotation (capacity drops 50%), and a 360° fully rotating truck or floor-mounted crane.



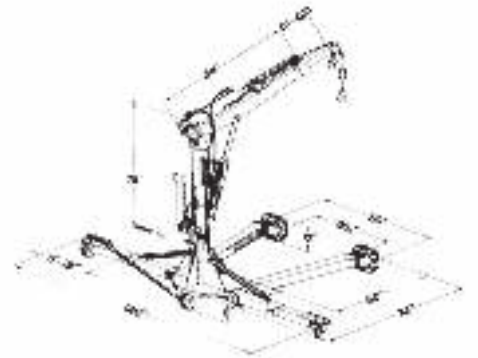
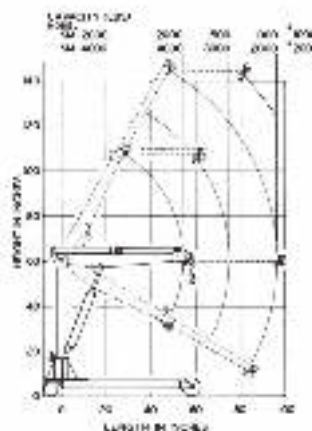
Truck-Mounted Super Master



SM-6000 shown with the following optional accessories: hydraulic powered telescopic boom, hand crank rotation, caster-equipped outriggers and is electrically operated.

MODEL NUMBER	SM-2000	SM-4000	SM-6000
Capacity (lbs.)			
With boom retracted	2,000	4,000	6,000
With boom extended	1,000	2,000	3,000
Maximum lift height (ft)			
With boom retracted	8	8	9
With boom extended	12	12	13
Floor to hook height (ft)			
With boom retracted	30	30	38
With boom extended	18	18	26
Maximum reach (in.)	78	78	78
Maximum reach beyond wheels (in.)	32	32	32
Overall height (in.)			
Without cable lift	60	60	73
With cable lift	66	66	79
Boom length (in) Adjustable	54-96	54-96	54-96
Overall length (in)	72	72	74
Overall width (in.)			
With outriggers extended	120	120	140
Width inside wheelbase (in)	36	36	36
Casters			
Rigid (two)	8 x 2.5	8 x 2.5	8 x 2.5 DUAL
Swivel (two)	6 x 2	6 x 2	6 x 2 DUAL
Shipping Weight (APPROX lbs.)	600	700	900

*SPECIFICATIONS



*Specifications are for standard manual units. **Note:** Counterweights of approximately 150 lbs. per foot of boom extension per 1000 lbs. of load must be secured to base when loaded to achieve maximum capacity. Counterweights not included.

HUSKY-MASTER SUPER-MASTER OPTIONS

Customize your Husky-Master or Super-Master crane with a variety of useful, ergonomic, and versatile features



1. Powered Telescopic Boom - Option #TB. Hydraulic powered telescopic boom allows for precise positioning of loads, extending, retracting, while the boom is fully loaded.

2. Extra Wide Wheelbase - Option #XW. Measures 60" inside wheelbase; has increased overall mast height 78" and maximum lift height of 13'.

3. Adjustable Legs - Option #A. Can be locked at three different overall widths; narrow (32") for travel through standard door ways; intermediate (48") and wide (64") for maximum stability. Also allows unit to be folded up for storage or transportation.

4. Telescopic Legs - Option #TL. Adjustable from 50" to 84". Extended legs keeps load center inside wheelbase and eliminates need for counterweights normally added to attain maximum rated capacities.

5. Gooseneck Boom - Option #GN. Provides additional 36" of reach for handling large, bulky objects or for reaching over obstructions. Gooseneck boom is rated for use only above 45° boom angle. Must be combined with a winch cable lift option

6. Winch Operated Cable Lift - Option #C2, #C4 or #C6. Available manual hand crank, 120V AC or 12V DC operated. Single line winch capacity is rated for half the capacity of the crane.

7. Self-Propelled Walkie-Type Drive - Option #SPB. When maximum mobility is required. Battery operated with variable speeds, 180° steering, safety switches and lift controls built in.

8. Large Pneumatic Wheels - Option #P16. For smoother, quieter operation for use indoor or out. Rigid wheels are 16" in diameter and swivel rear wheel is 12" in diameter. Reach beyond wheels is decreased 8".

Extra large wheels - Option #S12. Provides improved mobility with polyurethane-coated 12" diameter front wheels and 8" diameter dual swivel rear wheels. Also available with solid rubber wheels

Note: Wheel upgrades increase overall height and length of cranes.

9. Barrel Lifter / Dumper - Option #BLD. For simple lifting, positioning, rotating and dumping of barrels. Manual or powered.

10. Outriggers - Option #SMO-1 or #SMO-4. (Shown with optional wheels). Provides stability when rotating mast. Outriggers are telescopic and collapsible and can be supplied with casters. Only with outriggers in place can the mast be rotated 150° and must be locked into place before rotating the boom on the mobile crane version. Outriggers can not be retrofit as an option after crane production. Super-Master only.

11. Baseplates (truck-mounted shown here) - Option# BP. Can be supplied with fully rotating baseplates instead of, or in addition to, the standard wheelbase with legs. For mounting on truck, dock, floor. Floor or truck mounting permits 360° mast rotation. Super-Master only

12. Remote electrical controls - Optional pendant control station. Allows flexible operation within a 10 ft radius of the crane base. Standard controls are mast-mounted hand valves. Wireless remote controls also available.

Reversible Boom Crane



Custom RBC with compact base , powered telescopic mast lift, and triple section telescopic boom.



The RBC offers a wide range of motion.
Model RBC-6000SPBW shown with optional powered telescopic boom and hydraulic winch cable lift.



Go above
& beyond.

Model RBC-20000-SPBW self-propelled walkie-type crane with optional powered mast rotation and telescopic boom.

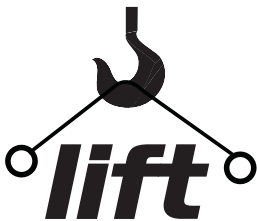
Reversible Boom Cranes

- 1,000 to 20,000 lb. capacities, up to 14 ft. lift height.
- Regular and extra heavy-duty capacity models available!
- Designed for reaching over and beyond obstacles to increase efficiency. Ideal for use in confined or barely accessible areas.
- Telescopic boom provides added versatility!
- Rugged design for long life.
- Manual hydraulic lifting cylinder is standard. Optional powered lifting cylinder available in electric, either battery (battery not included except on self-propelled models) or 120V AC.
- Self-propelled available for maximum mobility and versatility on regular-duty models. Standard on heavy-duty models (4,000 lb. capacities & up).
- Clear reach for heavy jobs. Up to an astounding 82" boom reach beyond its wheels when extended.
- 180° steering for incredible maneuverability! Built at only 34" inches wide for ease of passage through narrow doorways & aisles.

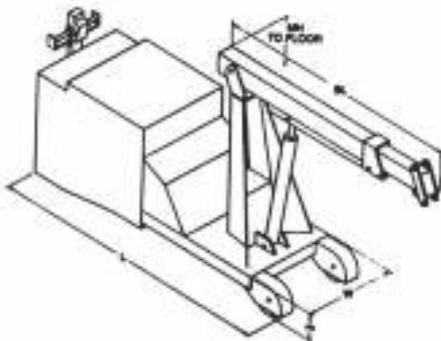
Ready to configure your own? Give us a call!



Model RBC-3000



& MOVE up to
10 tons with
ease!



Model RBKK-4000SPBW
self-propelled Reversible
Boom Knuckle Crane

MODEL NUMBER	RBC-1000	RBC-2000	RBC-3000	RBC-4000	RBC-6000	RBC-10000	RBC-15000	RBC-20000
Capacity (lbs.)								
With boom retracted	1,000	2,000	3,000	4,000	6,000	10,000	15,000	20,000
With boom extended	500	1,000	1,500	2,000	3,000	5,000	7,500	10,000
Counterweight (lbs.) - not included	900	1,700	2,600	-	-	-	-	-
Maximum lift height (in.)								
With boom retracted	102	102	102	118	128	128	128	128
With boom extended	144	144	144	160	170	170	170	170
Floor to hook height (in.)								
With boom retracted, lowered	36	36	36	35	29	29	29	29
With boom extended, lowered	18	18	18	11	5	5	5	5
Maximum reach beyond wheels (in.)	82	82	82	70	82	82	82	82
Overall mast height (in.)	64	64	64	76	76	89	89	89
Riding type only	-	-	-	89	89	89	89	89
Overall length (in.)	68	68	68	-	-	-	-	-
Walkie type	85	85	85	96	108	122	122	145
Riding type	-	-	-	100	112	126	126	149
Overall width (in.)	34	34	34	34	34	48	48	48
Boom length, fully adjustable from (in.)	54 - 96	54 - 96	54 - 96	60 - 108	72 - 120	72 - 120	72 - 120	72 - 120
Casters, rigid (in.)	8 × 2.5	8 × 2.5	8 × 2.5	12 × 3.5	12 × 3.5	12 × 4	12 × 4	12 × 4
Casters, swivel (in.)	6 × 2.5	6 × 2.5	6 × 2.5	-	-	-	-	-
Shipping Weight (lbs.)	800	800	900	5,000	6,000	11,000	12,000	15,000

Note: Only RBC-3000 and under are available manually propelled. *Specifications are for standard manual units. Additional options may increase overall size and/or weight.

Port-O-Giant

- 6,000 lb. capacity, up to 26 ft. lift height with gooseneck boom.
- Provides tremendous working ability at extremely low cost.
- Legs are adjustable and lock in three positions; 80 in. width provides maximum stability; 60 in. intermediate width; 34 in. minimum width enables crane to pass through doorways or move material down narrow aisles.
- Telescopic boom increases working adaptability.
- 180° steering makes maneuvering in tight areas easy.
- Four powered lifting options available: battery, 240/480V AC, LPG or gasoline engine. The hydraulic system controlling powered actions enables all movements to be made simultaneously. Standard model equipped with manual hand pump.
- Self-propelled available with choice of three power packs (gasoline, LPG engine or battery).

Portable
for quick deployment
at any site.

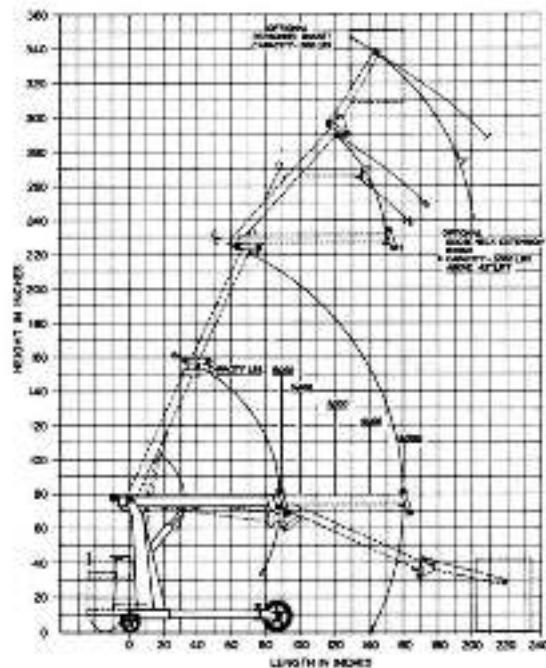


Self-propelled Port-O-Giant.
Model PG-6000SPBW



MODEL NUMBER	PG-6000
Capacity (lbs)	
Boom retracted	6,000
Boom extended	3,000**
Maximum lift height (ft.)	
Standard boom retracted	13
Standard boom extended	18
Gooseneck boom	22
Gooseneck attachment	26
Personal basket	26
Minimum floor to hook height (in.)	
Standard boom retracted	34
Standard boom extended	0
Maximum Reach (ft.)	
Standard boom retracted	5
Standard boom extended	12
Gooseneck boom	15
Gooseneck attachment	17
Personal basket	20
Mast height (in.)	77
Standard boom length	Fully adjustable from 8'-14'
Overall length (in.)	
Manually propelled	96
Self-propelled	122
Overall width:	Legs are adjustable to 34", 60", or 80". They can be folded beyond adjustment to 32"
Wheels	
Front (two)	5 x 16
Rear, dual (manually operated units)	2.5 x 10
Drive (self-propelled units)	4 x 10
Shipping weight (approx. lbs.)	
PG-6000	1,500
PG-6000-SPG, PG-6000-SPB	5,000

*SPECIFICATIONS



*Specifications are for standard manual units.

**Counterweights of approximately 100 lbs per foot of boom extension per 1000 pounds of load must be secured to the base to achieve maximum capacity (counterweight not required on self-propelled models)."

A-Frame Gantry Crane

- 500 to 10,000 lb. capacities, up to 16 ft. spans and 20 ft. heights.
- Simple, dependable and economical. The ideal crane for repair, service, and assembly operations conducted in fixed locations.
- Mobile as well as stationary cranes available. Identical to stationary crane except is mounted on four casters for mobility from one job site to another.
- Adjustable height cranes also available!
- Folds down for storage or shipment—quick and easy assembly. Space savings for transportation and storage when not in use. Crane can be assembled in less than 15 minutes.
- Available in aluminum construction for greater portability.



Model GC-41212W

Mobile model gantry crane shown with optional trolley, hoist and wheels.



Gantry cranes available with ultra-low profile hoist to maximize headroom.

A handy-man's best friend.

Under Beam Height (ft.)	Span (ft.)		8					10				
	Capacity		1,000	2,000	4,000	6,000	10,000	1,000	2,000	4,000	6,000	10,000
8	A	9'	9'	9'	9'	9'	9'	11'	11'	11'	11'	11'
	Model	GC188	GC288	GC488	GC688	GC1088	GC1108	GC2108	GC4108	GC6108	GC10108	
10	A	9'	9'	9'	9'	9'	11'	11'	11'	11'	11'	11'
	Model	GC1810	GC2810	GC4810	GC6810	GC10810	GC11010	GC21010	GC41010	GC61010	GC101010	
12	A	9'	9'	9'	9'	9'	11'	11'	11'	11'	11'	11'
	Model	GC1812	GC2812	GC4812	GC6812	GC10812	GC11012	GC21012	GC41012	GC61012	GC101012	
16	A	9'2"	9'2"	9'2"	9'2"	9'2"	11'2"	11'2"	11'2"	11'2"	11'2"	11'2"
	Model	GC1816	GC2816	GC4816	GC6816	GC10816	GC11016	GC21016	GC41016	GC61016	GC101016	
20	A	9'4"	9'4"	9'4"	9'4"	9'4"	11'4"	11'4"	11'4"	11'4"	11'4"	11'4"
	Model	GC1820	GC2820	GC4820	GC6820	GC10820	GC11020	GC21020	GC41020	GC61020	GC101020	

Under Beam Height (ft.)	Span (ft.)		12				16					
	Capacity		1,000	2,000	4,000	6,000	10,000	1,000	2,000	4,000	6,000	10,000
8	A	13'	13'	13'	13'	13'	17'	17'	17'	17'	17'	17'
	Model	GC1128	GC2128	GC4128	GC6128	GC10128	GC1168	GC2168	GC4168	GC6168	GC10168	
10	A	13'	13'	13'	13'	17'	17'	17'	17'	17'	17'	17'
	Model	GC11210	GC21210	GC41210	GC61210	GC101210	GC11610	GC21610	GC41610	GC61610	GC101610	
12	A	13'	13'	13'	13'	17'	17'	17'	17'	17'	17'	17'
	Model	GC11212	GC21212	GC41212	GC61212	GC101212	GC11612	GC21612	GC41612	GC61612	GC101612	
16	A	13'2"	13'2"	13'2"	13'2"	17'2"	17'2"	17'2"	17'2"	17'2"	17'2"	17'2"
	Model	GC11216	GC21216	GC41216	GC61216	GC101216	GC11616	GC21616	GC41616	GC61616	GC101616	
20	A	9'4"	13'4"	13'4"	13'4"	13'4"	17'4"	17'4"	17'4"	17'4"	17'4"	17'4"
	Model	GC11220	GC21220	GC41220	GC61220	GC101220	GC11620	GC21620	GC41620	GC61620	GC101620	



Tele-Mast Straddle Crane

- Hydraulically operated telescopic mast mobile gentry crane
- Designed for indoor/outdoor use
- Towable or self-propelled available
- Eliminates need for expensive hoists
- Power options available in 240/480V AC 3-phase, propane, or diesel engine
- Compact, modular design can be assembled/disassembled for transport
- Self-propelled models available in 2-wheel or 4-wheel drive with powered steering



TMSC-T6 Tow bar includes eye hitch and jack for height adjustment



No Hoist Required!

TMSC-LF6
Telescoping Lifting Forks
(4) Optional Attachments



Model TMSC-60101626-D2
Self-Propelled Straddle Crane

TMSC-CR6
Laterally adjustable cross beams with hook plates



MIGHTY HEAVY MOVERS



TMSC-60101016E

	Model	Capacity (lbs)	Span (ft.)	Length (ft.)	Under beam ht (ft.)	Vertical Travel (ft.)	Raised Under beam (ft.)
Compact, towable models 25HP 240/480V AC 3-phase	TMSC-60101016E	60,000	10	12	10	6	16
	TMSC-60101220E	60,000	10	12	12	8	20
	TMSC-60101422E	60,000	10	12	14	10	24
	TMSC-60101624E	60,000	10	12	16	12	28
38HP propane engine, air cooled	TMSC-PPG6						
26HP diesel engine, water cooled	TMSC-PDE6						
Self-propelled models Powered steering, diesel powered							
Two-wheel drive	TMSC-60101218-D2	60,000	10	12	12	6	18
Four-wheel drive	TMSC-60101218-D4	60,000	10	12	12	6	18
Two-wheel drive	TMSC-60101422-D2	60,000	10	12	14	8	22
Four-wheel drive	TMSC-60101422-D4	60,000	10	12	14	8	22
Two-wheel drive	TMSC-60101626-D2	60,000	10	12	16	10	26
Four-wheel drive	TMSC-60101626-D4	60,000	10	12	16	10	26
Two-wheel drive	TMSC-60101830-D2	60,000	10	12	18	12	30
Four-wheel drive	TMSC-60101830-D4	60,000	10	12	18	12	30
Options & Accessories							
Tow bar	TMSC-T6						
Cross beams with (4) adj hook plates	TMSC-CR6						
Spreader bar for 20 ft container	TMSC-SBR6	Powered lock, radio controlled push button					
Telescopic lifting forks (set of 4)	TMSC-LF6						
Extra span, per foot, up to 16 ft	Consult Factory						
Extra length, per foot, up to 24 ft	Consult Factory						

Portable Jib Crane

- 500 to 2,000 lbs capacities up to 12 ft spans.
- Completely self-contained with counterweight built-in to base.
- 4-way fork pockets provide easy access for portability
- **Note:** cranes do not come with trolley or hoist.



Model JCPRT-11010

No Installation Required!

MODEL #	CAP (lbs)	SPAN (ft)	HEIGHT (ft) UNDER BEAM	BASE (in)	WEIGHT
JCPRT-588	500	8	8	60 X 60	2400
JCPRT-5810	500	8	10	60 X 60	2500
JCPRT-5108	500	10	8	60 X 60	2700
JCPRT-51010	500	10	10	60 X 60	2800
JCPRT-188	1000	8	8	60 X 60	2800
JCPRT-1810	1000	8	10	60 X 60	3400
JCPRT-1812	1000	8	12	60 X 60	3500
JCPRT-1108	1000	10	8	60 X 60	3800
JCPRT-11010	1000	10	10	60 X 60	3900
JCPRT-11012	1000	10	12	60 X 60	4000
JCPRT-1128	1000	12	8	72 X 72	4400
JCPRT-11210	1000	12	10	72 X 72	4900
JCPRT-11212	1000	12	12	72 X 72	5200
JCPRT-11216	1000	12	16	72 X 72	5400
JCPRT-11220	1000	12	20	72 X 72	5700
JCPRT-21010	2000	10	10	72 X 72	6400
JCPRT-21012	2000	10	12	72 X 72	6500
JCPRT-21016	2000	10	16	72 X 72	6700
JCPRT-21020	2000	10	20	72 X 72	7500
JCPRT-21210	2000	12	10	72 X 72	7200
JCPRT-21212	2000	12	12	72 X 72	7400
JCPRT-21216	2000	12	16	72 X 72	8500
JCPRT-21220	2000	12	20	72 X 72	8800

Telescopic Mast Jib Crane

- 500 to 2,000 lb capacities, up to 12' spans and 18' heights.
- 360° manual rotation for versatile and agile handling
- Telescoping action is hydraulically operated, electrical or air powered.
- Dual-purpose design: unit can rotate under obstructions or reach into a cavity to pick up the load, then rotate the raise to a higher level over the obstruction below.

Experience a NEW dimension of versatility!



Model TMJC-510610E

Mast Height (ft)	Capacity	Beam Length			
		6	8	10	12
6-10	500	TMJC-56610E	TMJC-58610E	TMJC-510610E	TMJC-512610E
8-13	500	TMJC-56814E	TMJC-58814E	TMJC-510814E	TMJC-512814E
6-10	1,000	TMJC-16610E	TMJC-18610E	TMJC-110610E	TMJC-112610E
8-13	1,000	TMJC-16814E	TMJC-18814E	TMJC-110814E	TMJC-112814E
10-16.5	1,000	TMJC-161018E	TMJC-181018E	TMJC-1101018E	TMJC-1121018E
6-10	2,000	TMJC-26610E	TMJC-8610E	TMJC-210610E	TMJC-212610E
8-13	2,000	TMJC-26814E	TMJC-28814E	TMJC-210814E	TMJC-212814E
10-16.5	2,000	TMJC-261018E	TMJC-281018E	TMJC-2101018E	TMJC-2121018E

*All 'E' units are 120V AC with push button control
 **'E3' suffix is for 3-phase, 240/480V AC powered
 ***'A' suffix is for air powered hydraulics for hazardous operations

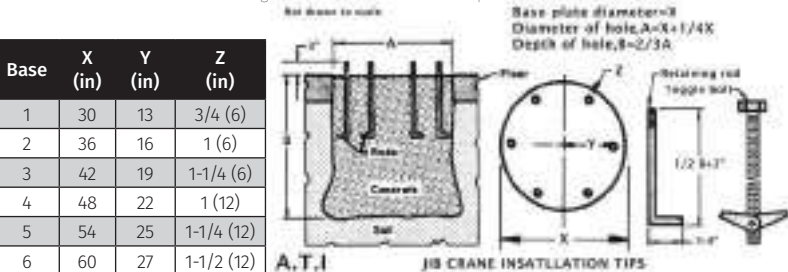
Floor-Mounted Jib Crane

- 500 to 10,000 lb. capacities, up to 20 ft. spans and heights.
- 360° rotation—provides flexible use in a fixed location. Self-supporting crane solves lifting and positioning problems within entire circumference area of boom. Manual rotation standard; powered rotation optional (Model JCPR-consult factory).
- Requires little headroom. Ideal when overhead cranes are not practical.
- Collector rings available for electrically powered units.

Easy Jib Crane Installation

1. Dig a hole to a size determined by the formula below.*
2. Prepare threaded retaining rods. Rod length should be half the hole plus 3" to stick out above floor level.
3. Pour concrete to half of the hole depth, perform steps 4 & 5 before it sets.
4. Use pattern to determine location of threaded retaining rods.
5. Rod should be held in position while rest of hole is filled with concrete, making sure threaded end is sticking out above floor level.

*On very sandy soil or unstable ground, the hole should be dug deeper for greater stability. Note: On a good 5" - 6" reinforced concrete floor, jib cranes can be installed using expansion toggle bolts (illustrated). Note: Consult with a structural designer to confirm foundation requirements.



Base	X (in)	Y (in)	Z (in)
1	30	13	3/4 (6)
2	36	16	1 (6)
3	42	19	1-1/4 (6)
4	48	22	1 (12)
5	54	25	1-1/4 (12)
6	60	27	1-1/2 (12)

Cranes do not come with trolley or hoists.



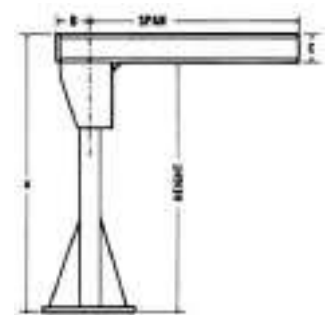
Model JC-21016



*Model JC-42020PR-M Smart Jib Crane shown with optional festooning system, collector ring, powered mast rotation with variable frequency drive, and powered trolley with wire rope hoist.

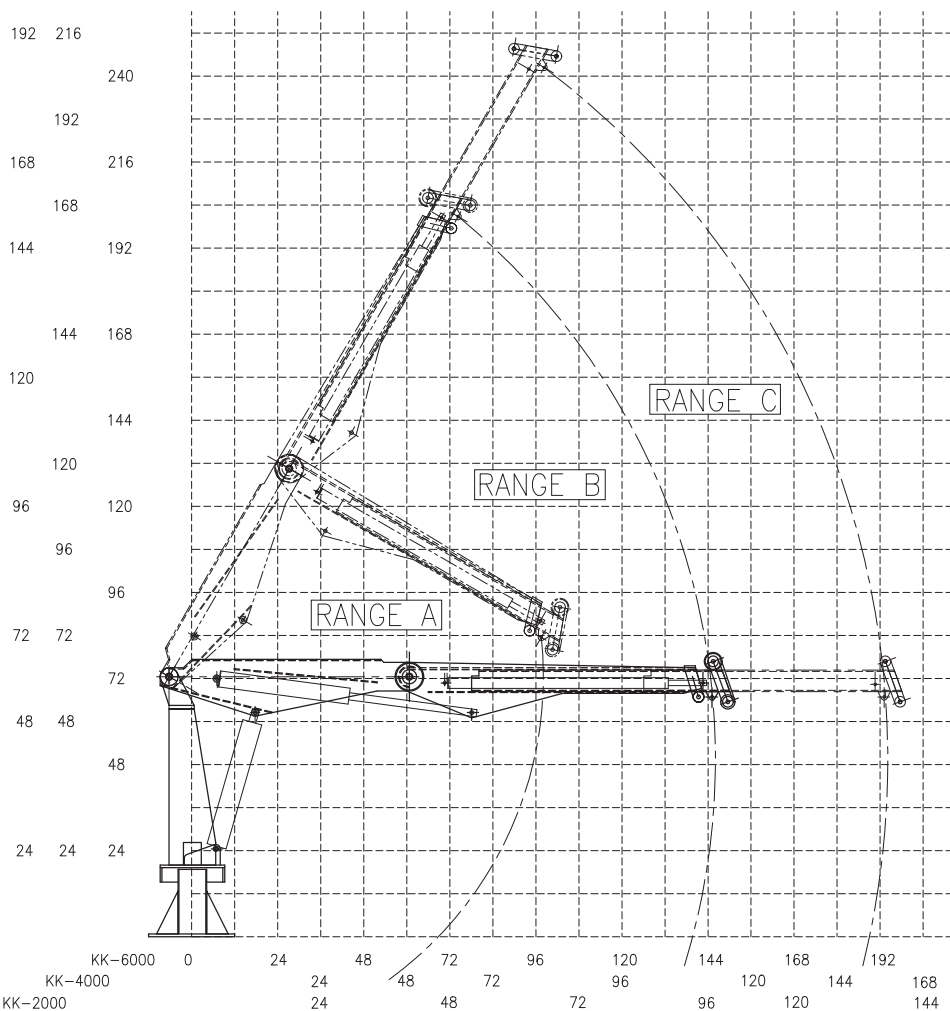
Mast Height (ft.)	Span (ft.) Capacity	8					10				12				
		8	A	8'8"	8'10"	9'3"	9'6"	9'6"	8'10"	9'3"	9'6"	9'6"	8'8"	9'	9'3"
10	A	10'8"	10'10"	11'3"	11'6"	9'6"	10'10"	11'3"	11'6"	11'6"	11'	11'	11'3"	11'6"	11'8"
12	A	12'6"	12'10"	13'3"	13'6"	13'6"	12'10"	13'3"	13'6"	13'6"	12'10"	13'	13'3"	13'6"	13'8"
16	A	16'8"	16'10"	17'3"	17'6"	17'6"	16'10"	17'3"	17'6"	17'6"	16'10"	17'	17'3"	17'6"	17'8"
20	A	20'8"	21'10"	21'3"	21'6"	21'6"	21'	21'3"	21'6"	21'6"	21'10"	21'	21'3"	21'6"	21'8"

Mast Height (ft.)	Span (ft.) Capacity	14				16				20			
		8	A	9'	9'6"	9'6"	10'	9'3"	9'6"	9'8"	10'	9'3"	9'8"
10	A	11'	11'6"	11'6"	12'	11'3"	11'6"	11'8"	12'	11'3"	11'8"	11'8"	12'
12	A	13'	12'8"	13'6"	14'	13'3"	13'6"	13'8"	14'	13'3"	13'8"	13'8"	14'
16	A	17'	17'6"	17'6"	18'	17'3"	17'6"	17'8"	18'	17'3"	17'8"	17'8"	18'
20	A	21'	21'6"	21'6"	22'	21'3"	21'6"	21'8"	22'	19'6"	21'8"	21'8"	22'



Truck Mounted Knuckle Crane

- 2,000, 4,000 & 6,000 lb. capacities.
- Lift height up to 18 feet.
- Reaches over, beyond and underneath itself making it ideal for big, bulky or awkward loads!
- Knuckle-boom action permits precise positioning.
- Powered 350° mast rotation and telescopic boom.
- Outriggers for added stability and push button remote controls are also available.



Model KK-4000 with optional 120V AC power pack and standard mast mounted hand valve controls.

OPTIONS	MODEL NUMBER
120V AC 1 Phase	KK-E2
12V Battery Operated	KK-PB
220 / 480V 3 Phase	KK-PE
Gasoline Engine	KK-PG
Hydraulic Pump	KK-PTO

SPECIFICATIONS	MODEL NUMBER	KK-2000	KK-4000	KK-6000
Capacity				
Range A		2,000	4,000	6,000
Range B		1,000	2,000	3,000
Range C		500	1,000	1,500

*Specifications are for standard manual units.

Truck Mounted Foldable Crane

- 2,000 lb. capacity, up to 130 in. lift height.
- Crane folds up for portability. Can be carried by two people; has built-in carrying handles.
- Boom powered by hydraulic cylinder for smooth, easy operation. Hand pump operation standard.
- 360° base plate rotation. Base plate can be mounted in an upright position or inverted to keep truck beds clear.
- Powered lifting cylinder, winch operated cable lift, and remote controls are available. Can be powered either by battery or plug-in 120V AC.



Model TMF-2000

Base Inverted



MODEL NUMBER	TMF-2000
Capacity (lbs.)	2,000
With boom extended	1,000
Boom Length (in)	Adj. 52 to 86
Maximum lift height (in)	130
With boom retracted	106
Overall height (in.)	
Base upright	66
Base inverted	56
Weight:	400

OPTIONS	MODEL NUMBER
Extra Baseplate	TMF-BP-2
Powered Lifting Cylinder	
Battery	TMF-PBA-2
110-VAC	TMF-PE-2
Remote Control	TMF-EC-1
Cable lift*	TMF-C-2
*1 line - 1,000 Capacity	
*2 line - 2,000 Capacity	

*Specifications are for standard manual units.

Truck Mounted Pick-Up Crane

- 500 and 1,000 lb. capacities.
- 360° base plate rotation.
- Lightweight—can be carried easily by hand.
- Crane includes boom, manual winch, and mast insert assembly. Ideal for mounting on pick-up truck or as a portable shop crane.
- Boom locks at three different angles.
- Power winch with remote control available. Either battery or 120V AC power operated winches are options.
- Extra base plates and mast extension increase usage, same crane can be easily used in various locations.



Model PU-1000-E with optional mast extension

Model PU-1000-E

MODEL NUMBER	PU-500	PU-1000
Capacity (lbs.)	500	1,000
Boom Length (in)	48	48
Reach (in)	44	44
Hook height (in.)		
Low setting	8	8
Intermediate Setting	26	26
High setting	40	40

OPTIONS	MODEL NUMBER	
	PU-500	PU-1000
Basic Crane With		
Battery Winch	PU-500-PB	PU-1000-PB
Electric Winch, 110-VAC	PU-500-E	PU-1000-E
Baseplate	PU-BP-5	PU-BP-10
Mast Extensions		
2 ft		PU-ME-2
3 ft		PU-ME-3
4 ft		PU-ME-4
5 ft		PU-ME-5

*Specifications are for standard manual units.



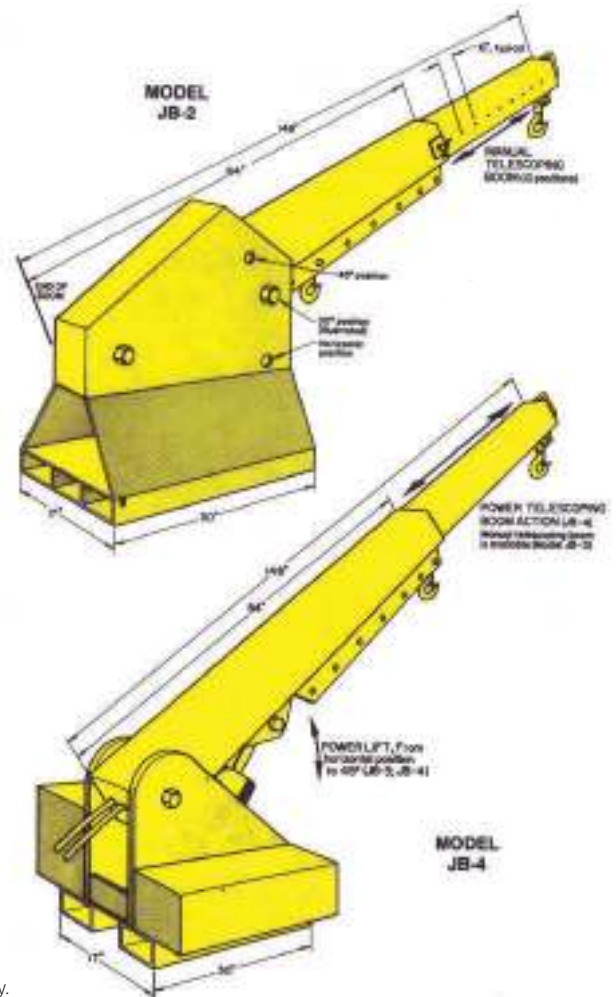
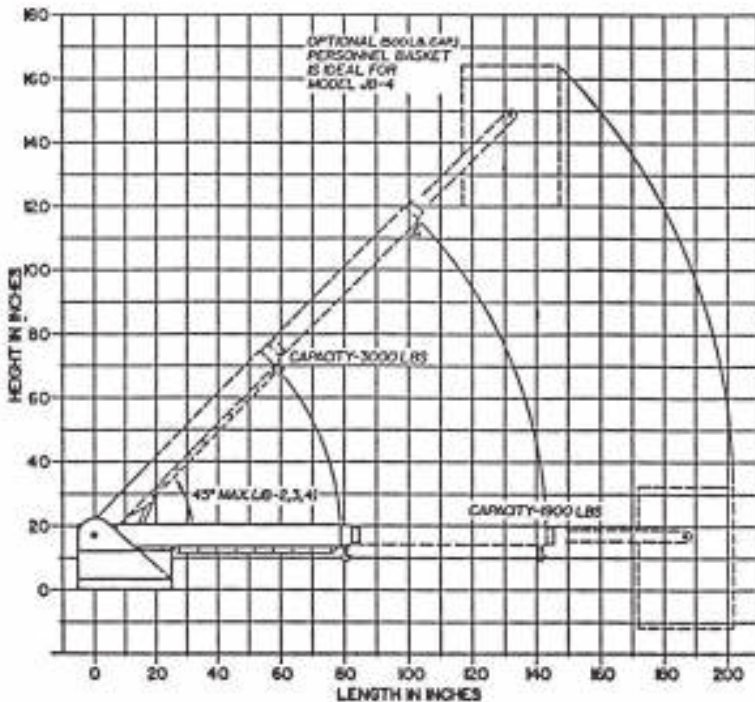
Jib-Master Forklift Crane

- 3,000 lb. capacity, 146 in. reach.
- Fully-powered—ready for action. Includes self-contained power pack and remote push-button controls; choice of 120V AC or 12V DC (battery) power.
- Five standard models to meet your specific needs. The standard Jib-Master (JB-1), is a non-lift model. Hook height and boom angle is determined by the lift and tilt capabilities of the forklift. The JB-2 has the additional capabilities of a three-position adjustable tilt; horizontal, 30° and 45°. A pin securely holds the boom in position and is easily removed to change tilt angle. The JB-3 has hydraulic-powered lift and manual boom actions. The JB-4 has both hydraulic-powered lift and telescopic boom action. The JB-4R model offers the same capabilities as the JB-4 with the addition of rotation.

Got a forklift?
Add **value.**



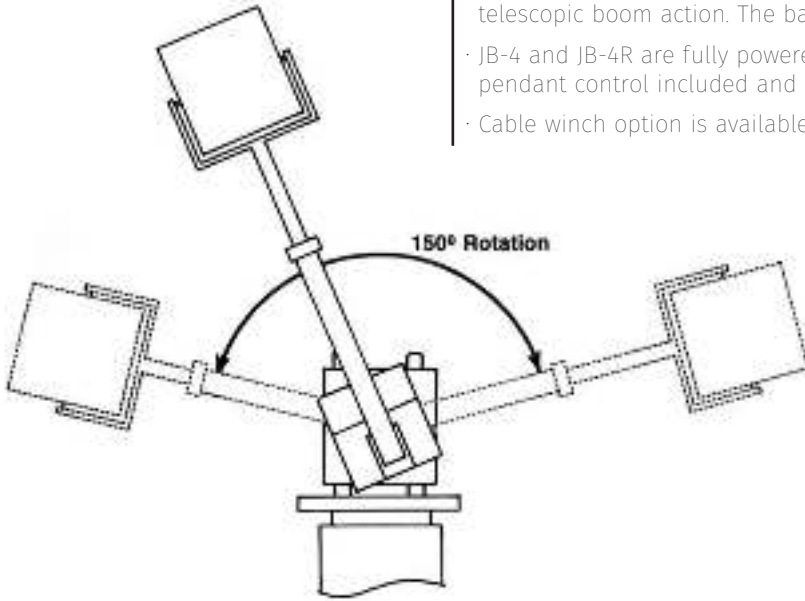
Model JB-1



Note: Minimum 10,000lb. forklift truck recommended for JB-4R when lifting at full rated capacity.

Rotating Jib-Master

- 3,000 lb. capacity, 146 in. reach.
- 150° rotation on forklift truck offers a new dimension to the forklift-crane combination.
- 360° rotation when floor or truck-mounted. Can be permanently or temporarily mounted with a pedestal on a truck bed. With the addition of rotation.
- Personnel basket optional-ideal for maintenance work. Recommended for use with the JB-4 and JB-4R because they offer hydraulic-powered tilt and telescopic boom action. The basket size is 24" W × 36" L × 42" H.
- JB-4 and JB-4R are fully powered 12V DC self-contained powerpack with pendant control included and available with optional battery charger.
- Cable winch option is available.

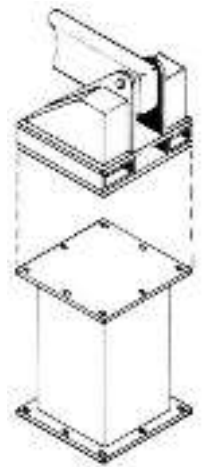


Model JB-4R with optional personnel basket.



Stationary Mounted

Permanently or temporarily on a pedestal from 2 ft. to 5 ft. and offering rotation of 360°.



OPTION	MODEL JB-4R
Mounting Pedestal	
2 ft. high	JB-PD-2
3 ft. high	JB-PD-3
4 ft. high	JB-PD-4
5 ft. high	JB-PD-5

SPECIFICATIONS	
Capacity (lbs)	
With boom retracted	3,000 all models
With boom extended	2,000 all models
Maximum lift angle	45°, JB-2, 3, & 4
Floor to hook height	
With boom extended	8' at 45
Maximum Reach (in.)	
Adjustable from	86 to 146
<ul style="list-style-type: none"> · JB-1 and JB-2 cranes have adjustable booms that telescope in 10, 6" increments · Cranes fit tines that adjust down to 17" width · Two Safety-latch hooks are provided · 7 lifting holes on underside provides a variety of hook and sling mounting positions 	

Note: Minimum 10,000 lbs forklift truck recommended for using Jib-Master at full rated capacity.

The Pallet Flipper



Automatic Feed



Inverting



Exit Automatically

Rotates & inverts loads easily and safely.

Uponder Inverter

- Can be inverted 90° or 180°
 - The rotation is electro-mechanically operated and driven by a gearbox speed reducer with integrated brake motor.
 - Loads can enter and exit from the front or either side. Larger loads can protrude or overhang on either side if necessary.
 - Units available from 2,000 to 10,000 lb. capacities. Custom units available up to 50,000 lbs capacity.
 - A variety of platform sizes available: See specifications for details.
 - Optimize with roller conveyor. Guide loads automatically, then gently clamp together with the hydraulically-operated scissor platform. Conveyor height reduces throat opening from 6" to 12", depending on conveyor capacity requirement.
- Heavy-duty welded steel construction, for industrial use. Ideal for inverting molds, castings, pallets, plywood sheets, glass, printed materials and other products that need to be inverted in the manufacturing process.

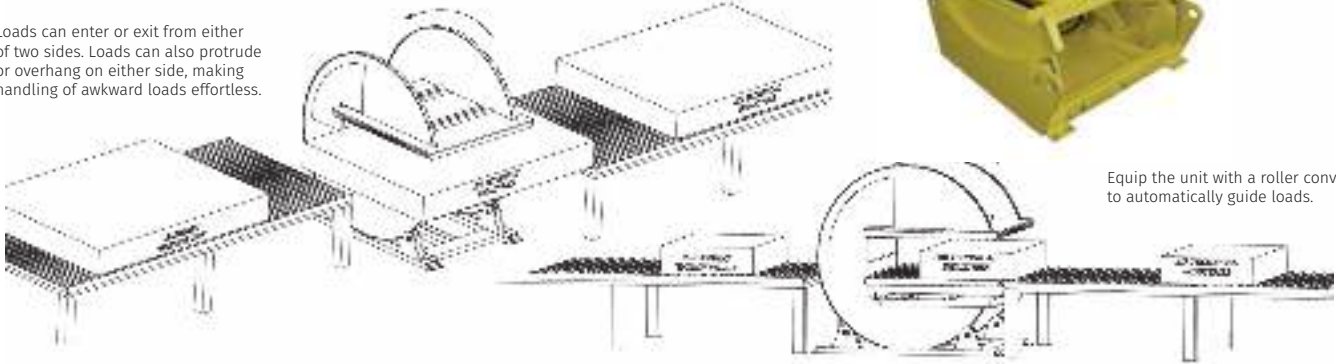


Unit shown with optional air cushion conveyor.



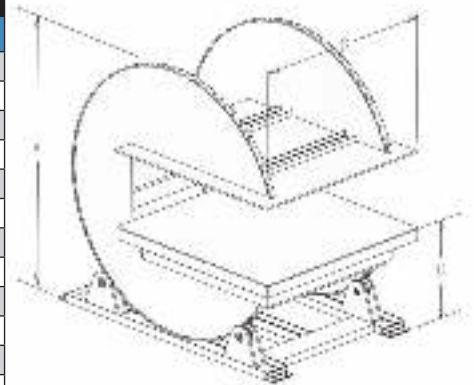
Mini Uponder Inverters available in 250 pounds capacities.

Loads can enter or exit from either of two sides. Loads can also protrude or overhang on either side, making handling of awkward loads effortless.



Equip the unit with a roller conveyor to automatically guide loads.

Capacity (lbs)	Platform Size (in)	Max Opening (in)	Min Opening (in)	Dim. A	Dim. B	Dim. C	Model Numbers
							Electric Motor
2,000	48 x 48	50	20	107	48	33	UI-24848E
2,000	48 x 72	52	6	114	72	36	UI-24872E
2,000	54 x 96	66	6	129	96	36	UI-25496E
4,000	48 x 48	50	20	107	48	33	UI-44848E
4,000	48 x 72	52	6	114	72	36	UI-44872E
4,000	54 x 96	66	6	129	96	36	UI-45496E
6,000	48 x 48	50	20	107	48	33	UI-64848E
6,000	48 x 72	52	6	114	72	36	UI-64872E
6,000	54 x 96	66	6	129	96	36	UI-65496E
10,000	48 x 48	50	20	107	48	33	UI-104848E
10,000	48 x 72	52	6	114	72	36	UI-104872E
10,000	54 x 96	66	6	129	96	36	UI-105496E



Container Dumper

- Up to 6,000 lbs. capacities, 64" dump heights
- Smooth, controlled hydraulic operation.
- Can handle metal or plastic drums, square or rectangular containers.
- Adjustable retaining bar for various sizes of containers.

One-Touch Dumping



Model CD-25450E

Capacity (lbs)	Dump Height (in)	Reach (in)	Chute Size (in)			Model Number
			W	D	H	
1,000	54	6	38	36	63	CD-13836E
1,000	54	6	44	42	63	CD-14442E
1,000	64	6	54	48	73	CD-15450E
2,000	54	6	38	36	63	CD-23836E
2,000	54	6	44	42	63	CD-24442E
2,000	64	6	54	48	73	CD-25450E
4,000	54	6	38	36	63	CD-43836E
4,000	54	6	44	42	63	CD-44442E
4,000	64	6	54	48	73	CD-45450E
6,000	54	6	38	36	63	CD-63836E
6,000	54	6	44	42	63	CD-64442E
6,000	64	6	54	48	73	CD-65450E

Telescopic Container Dumper

- Capacities up to 6000 lbs., dump heights up to 9'.
- Load the ground level deck, 11ft to desired height, and DUMPI
- Available with standard carbon steel or stainless steel dumping chute.
- Unit will increase productivity and reduce work-related injuries.

New & Unique



Model CDT-25450E

Capacity (lbs)	Dump Height (in)	Reach (in)	Chute Size (in)			Model Number
			W	D	H	
1,000	64-104	6	38	36	74	CDT-13836E
1,000	68-108	6	54	50	74	CDT-15450E
2,000	64-104	6	38	36	74	CDT-23836E
2,000	68-108	6	54	50	74	CDT-25450E
4,000	64-104	6	38	36	74	CDT-43836E
4,000	68-108	6	54	50	74	CDT-45450E
6,000	64-104	6	38	36	74	CDT-63836E
6,000	68-108	6	54	50	74	CDT-65450E

Add Time-Savings & Worker Efficiency to your Operation!



Pallet Inverters

- 2,000 & 4,000 lb. capacities, handles up to 64 inch high pallets.
- Clamping plates travel parallel and uniform on a rugged track to keep the load secure. Clamping style allows unit to be loaded and unloaded from front side.
- The self-supportive base is equipped with two-way fork pockets for easy positioning or relocating. Ideal for situations where a damaged pallet, box, or bag needs to be removed from the bottom of a full load.
- Can be used to easily transfer an entire load from one pallet or platform to another. Also used to invert stacks of sheets, paper boards and rolls rather than one by one. Freezer spacers can easily be removed by turning the load 90° on its side.

Capacity (lbs)	Platform Size (in)	Max Opening (in)	Min Opening (in)	Model Number
2,000	36 x 36	46	26	PI-23636E
2,000	42 x 48	52	32	PI-24242E
2,000	48 x 48	58	38	PI-24848E
4,000	48 x 48	58	38	PI-44848E
4,000	54 x 54	64	44	PI-25454E
4,000	54 x 54	64	44	PI-45454E

Higher Production at a Lower Cost!



Econo-Verter

- 2,000 & 4,000 lb. capacities, handles up to 64 inch high pallets.
- Easily inverts fully loaded pallets 180°. Ideal for situations where a damaged pallet, box, or bag needs to be removed from the bottom of a full load.
- Also can be used to invert bundles, sheets, coils, or any other stack of material.
- Fixed box opening cradles load without the need for more expensive clamping type machines.
- Simple, rugged design for easy operation and durability.

Capacity (lbs)	Platform Size (in)	Fixed Opening (in)	Model Number
2,000	36 x 36	46	EPI-23636E
4,000	36 x 36	46	EPI-43636E
2,000	48 x 48	58	EPI-24848E
4,000	48 x 48	58	EPI-44848E
2,000	54 x 54	64	EPI-25454E
4,000	54 x 54	64	EPI-45454E

Accessories & Attachments



- 1. Universal Spreader Bar:**
Model USB. Capacities 2,000- 10,000 lbs. Widths: 4', 6', 8', 10', 12', 16'.
- 2. Adjustable Lifting Forks:**
Model-LF-2000-3. Available with 30" & 50" throat and 2,000, 4,000 & 6,000 capacities.
- 3. Coil and Reel Lifter:** Model CL-2000
- 4. Barrel Clamp:** Model BC- 1.
- 5. Barrel Lifter I Dumper:**
Model BLD. Works with a wide variety of lifting units.
- 6. Barrel Lifter / Dumper:**
Model A-BLD-4. Available in manually operated (A-BLD-1): hand crank (A-BLD-2) and electrically powered with push button control (A-BLD-3).

Ordering Information

Warranty

Air Technical Industries warrants that its products shall be free from defects in material and workmanship under normal and ordinary usage when owned by the original purchaser for a period of twelve months from the date such products are shipped from Air Technical Industries. Hydraulic and electrical components are warrantied for 90 days. The customer must cease use of the product pending Air Technical Industries' substantiation of any warranty claim. In the event that a product defect shall occur during the warranty period, Air Technical Industries shall provide replacement parts free of charge. Labor to replace the parts is not considered part of the warranty. Any unauthorized repairs on said products will render the warranty null and void. By accepting

product delivery, purchaser agrees to the terms of this warranty. Due to their design and construction, Air Technical Industries' products are not crated. Contact us for specific crating charges. No product can be returned unless or until a Return Authorization Form is submitted with required signature of customer.

The following schedule of charges will apply for return of standard units:

Less than 2 weeks- 25% restocking fee plus shipping charges.

More than 2 weeks-up to 3 months-40% restocking fee plus shipping charges.

No returns after 90 days.

Modified units or specially coated units are not returnable.

Prices

Prices listed in the accompanying price list are consumer list prices

and are subject to change without notice, although every effort will be made to announce any changes 30 days in advance. Typographical errors, should they occur, are subject to correction.

Terms of payment

Net 30 days. 1% discount for payment in ten(10) days. Discount does not apply to freight. Disputes over invoice must be made within ten(10) days from date of invoice. All outstanding invoices will be considered delinquent after 60 days. MasterCard, VISA, Discover, and AMEX are accepted. Leasing programs are available. A non-refundable pre-payment is required on all modified orders. Lead time begins at time of receipt of pre-payment and signed approval drawings.

Shipping: F.O.B. Air Technical Industries, Mentor, OH.

SAFETY GUIDE

Presenting several simple methods to ensure maximum safety in the use of ATI equipment to help maintain a safe workplace for your most important assets:

Your Employees.

STOP ergonomic related injuries, they are painful, costly, and time consuming. ATI has ERGONOMIC SOLUTIONS to avoid injuries from lifting, straining, bending, stooping, reaching, stretching, twisting, pulling, or pushing, all while you improve efficiency and profits!

Built-in Safety Features *The following features are standard in every unit*

1. Generous 3:1 safety factors on all structural components.
2. Hydraulic systems with built-in pressure relief valve to prevent overloading.
3. Lift table tops have a standard 3" overhang to prevent shearing when lowered.
4. Secondary overload protection on all 3-phase electric systems.
- 5 "Dead man" controls standard; if controls are released, the equipment stops.

Available Safety Options *Ask your regional sales manager for more information*



[not pictured] Velocity fuses or holding valves are available to prevent a lift from collapsing in the event of a hydraulic failure (standard feature on man lifts or dock lifts)

LIFT TABLES, DOCK LIFTS, MAINTENANCE LIFTS



ZERO-LOW LIFT



ZERO-LOW LIFT & TILT



ZERO-LOW DOCK LIFT



SELF-PROPELLED LIFT TABLES



ROTATING TOP LIFT TABLE



MAINTENANCE LIFTS



DOUBLE SCISSOR LIFT TABLE



HYDRAULIC & MECHANICAL LIFT TABLES



LIFT & TILT TABLES



ZERO-LOW UPENDER



TANDEM SCISSOR LIFT

MOBILE, PORTABLE CRANES, TRUCK CRANES



PORT-O-GIANT



HUSKY-MASTER



TRUCK MOUNTED FOLDABLE CRANE



TRUCK-MOUNTED PICK-UP CRANES



REVERSIBLE BOOM CRANE



V-MASTER



KNUCKLE KRANE



SUPER-MASTER

BEAM CRANES, FORK ATTACHMENTS, PALLET INVERTERS



ZERO-LOW 3-POINT ENTRY UPENDER INVERTERS



PALLET INVERTERS



CONTAINER DUMPERS



JIB-MASTER



LIFT TRUCKS



JIB CRANES



GANTRY CRANES



DOUBLE GIRDER GANTRY CRANE

ATTACHMENTS & ACCESSORIES



LIFTING FORKS



UNIVERSAL SPREADER BAR



BARREL LIFTER-DUMPER

COIL & REEL LIFTER

BARREL CLAMPS



7501 Clover Avenue
Mentor, OH 44060

P: 888-857-6272
F: 440-953-9237

ati@airtechnical.com
www.airtechnical.com