

SHOPPA'S MATERIAL HANDLING

DELIVERING BIG SOLUTIONS AND BIG TRUCKS TO HELP KEEP YOU MOVING IN 2021

The new High-Capacity Core IC Pneumatic (2THD) combines modern innovation with the quality and overall value you've come to expect from Toyota. Built using the Toyota Production System in the heartland of America, you can expect industry-leading lead times and rapid parts distribution to keep your operation on the go.

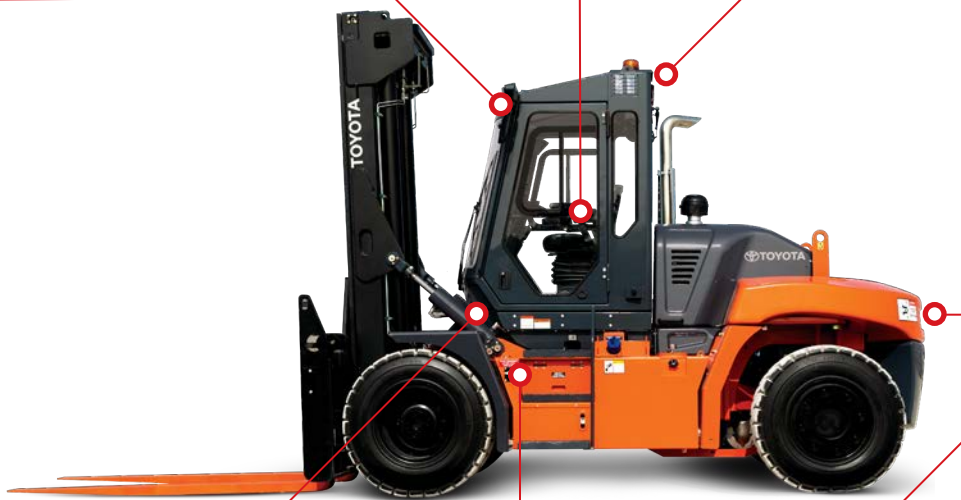
7" MD4 Touchscreen display offers key information and parameter adjustments



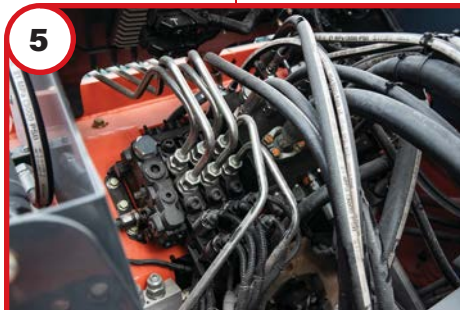
Premium steel cabin with ergonomic air ride seat and fingertip controls



Full side tilt cab for ease of service and repair



Mid-mount tilt cylinders for enhanced mast and tilt parameters



Cummins QSB 4.5 diesel engine provides superior power and torque



Compact footprint with smooth turning and gear shift

SHOPPA'S MATERIAL HANDLING



**SCAN HERE TO VIEW
THE 2THD VIDEO!**



KEY ADVANTAGE: PERFORMANCE/DURABILITY

Cummins 4-cylinder diesel engine (173 HP) provides superior torque, power, and fuel efficiency

Dana TE-10 transmission with electronic control offers smooth, reliable operation

Heavy-duty drive axle offers maximum durability in high-capacity, outdoor applications

Wet-disc brakes provide consistent performance and are virtually maintenance free to minimize your downtime and operation costs

Engine protection system and high-capacity cooling provide durability assurance

KEY ADVANTAGE: ERGONOMICS/ VISIBILITY

Standard premium cabin includes heat/AC and an air-ride seat to keep operators comfortable all shift long

Air-ride seat comes standard with premium cabin and provides various adjustments to tailor settings for each operator

Hi-visibility mast, low-profile carriage, and clear view glass provide clear sight lines and optimal fork tip visibility

Fingertip controls and adjustable armrest allow for comfortable and productive material handling

KEY ADVANTAGE: SERVICE

Side tilt cab opens 65° for easy access and enhanced serviceability with power-tilting cab option available

Advanced hydraulic system includes low number of connection points for easier maintenance

7" MD4 touchscreen display provides real-time diagnostics, pressure readings, live virtual fuse box, service manuals, and more

Easy-open hood and intuitive component placement makes service a breeze

**MADE
IN THE USA**



**FOR MORE DETAILS, CHECK
OUT THE 2THD BROCHURE!**

Hover your smartphone camera
over the QR code to open the link.

